



pure acoustics®





 pure acoustics<sup>®</sup>



## Multi Zone Amplifiers

### 1000W 4-Zone Stereo Amplifier with Independent Volume Control for Each Zone; Subwoofer Output, and Optical Input

### ZONE PILOT-4 ULTRA

- 2 Active subwoofer outputs for wide and deep sound dispersion
- Passive subwoofer output that includes separate volume control (100W RMS)
- CLASS-D amplification, 100W RMS per zone
- Receiver is 2U, 19" RACK cabinet mounting-compatible
- Multiple connection options: BT / USB / AUX / FM RADIO / COAX / OPTICAL
- Smart DSP
- 2-band equalizer to control bass/treble
- PRE OUT output allows connection of an additional amplifier, expanding the sound system
- Dual microphone input: Priority input lowers music during announcements; includes ECHO effect on both
- Illuminated LCD display: Shows operating status, volume, and real-time data
- Suitable for installation in a communications rack



#### Specifications:

- Total Power: 800W RMS + 200W SUBWOOFER
- Power per Zone:  $4\Omega = 300W$  RMS |  $8\Omega = 200W$  RMS
- Number of Zones: 4
- Subwoofer Outputs: 2 active + 1 passive
- Frequency Response: 20Hz–20kHz  $\pm 1$  dB
- Minimum Impedance: 4 $\Omega$
- Total Harmonic Distortion (THD): Less than 0.1% at standard listening levels
- Rack Installation: 1U | 19" RACK
- Dimensions: 48.2 x 36.5 x 9.8 cm

### 500W 4-Zone Stereo Amplifier with Independent Volume Control for Each Zone; Active/Inactive Subwoofer Output, and Optical Input

### ZONE PILOT-4 PRO

- 2 Active subwoofer outputs for wide and deep sound dispersion
- Passive subwoofer output that includes separate volume control (100W RMS)
- CLASS-D amplification, 100W RMS per zone
- Receiver is 2U, 19" RACK cabinet mounting-compatible
- Multiple connection options: BT / USB / AUX / FM RADIO / COAX / OPTICAL
- Smart DSP
- 2-band equalizer to control bass/treble
- PRE OUT output allows connection of an additional amplifier, expanding the sound system
- Dual microphone input: Priority input lowers music during announcements; includes ECHO effect on both
- Illuminated LCD display: Shows operating status, volume, and real-time data
- Suitable for installation in a communications rack



#### Specifications:

- Total Power: 400W RMS + 100W SUBWOOFER
- Power per Zone:  $4\Omega = 150W$  RMS |  $8\Omega = 100W$  RMS
- Number of Zones: 4
- Subwoofer Outputs: 2 active + 1 passive
- Frequency Response: 20Hz–20kHz  $\pm 1$  dB
- Minimum Impedance: 4 $\Omega$
- Total Harmonic Distortion (THD): Less than 0.1% at standard listening levels
- Rack Installation: 1U | 19" RACK
- Dimensions: 48.2 x 36.5 x 9.8 cm

## 300W 6-Zone Stereo Amplifier with Independent Volume Control

## ZONE PILOT-6

- Built-in Bluetooth for Wireless Audio Streaming
- Full Function Remote Control Showing Mode Play Status
- Digital LCD Display Showing MP3/BT/AUX Mode Playing Status
- 3.5mm Audio to Connect & Stream Audio from External Device
- (2) 1/4" /6.35mm/TRS Microphone Input Jacks with Voice Priority button
- USB Flash Drive
- MIC1 & MIC2 Volume and Echo Controls
- Music Bass/Treble Controls
- ZONE1/ZONE2/ZONE3/ZONE4 & Master Volume Control
- (8) Pairs of Push Type Speaker Output Connectors
- RCA (L/R) AUX Input Connectors
- RCA (L/R) PRE Output Connectors
- RCA Subwoofer Output Connectors
- Coaxial & Optical Inputs
- With FM Antenna & Standard 2.4G BT Antenna
- 110V/220V Voltage Selector
- Fuse Holder for Convenient Fuse Replacement
- Built-in Short Circuit/Over load/ Over- Voltage Protection



### Specifications:

- Power Output: 50W \* 6CH (40hm, RMS at 1% THD)
- Freq. Response: 40Hz-20kHz
- Resistance: 4Ω-16Ω
- Dimensions (L x D x H): 48.3 x 30 x 8.8 cm

## 200W 4-Zone Stereo Amplifier with Independent Volume Control for Each Zone; Active/Inactive Subwoofer Output, and Optical Input

## ZONE PILOT-4

- 2 Active subwoofer outputs for wide and deep sound dispersion
- CLASS-D amplification, 50W RMS per zone
- Multiple connection options: BT / USB / AUX / FM RADIO / COAX / OPTICAL
- Smart DSP
- 2-band equalizer to control bass/treble
- PRE OUT output allows connection of an additional amplifier, expanding the sound system
- Dual microphone input: Priority input lowers music during announcements; ECHO effect on both
- Illuminated LCD display: Shows operating status, volume, and real-time data



### Specifications:

- Total Power: 200W RMS
- Power per Zone: 4Ω = 75W RMS x4 | 8Ω = 50W RMS x4
- Frequency Response: 20Hz-20kHz ±1dB
- Minimum Impedance: 4Ω
- Total Harmonic Distortion (THD): Less than 0.1% at standard listening levels
- Dimensions: 35 x 26 x 9.8 cm

## 200W 2-Zone Stereo Amplifier

## ZONE PILOT-2 PRO

- With Independent Volume Control for Each Zone; Subwoofer Output, and Optical Input
- 2 Active subwoofer outputs for wide and deep sound dispersion
- Passive subwoofer output that includes separate volume control (100W RMS)
- CLASS-D amplification
- Receiver is compatible for mounting in a 2U, 19" RACK cabinet
- Multiple connection options: BT / USB / AUX / FM RADIO / COAX / OPTICAL
- Smart DSP
- 2-band equalizer to control bass/treble
- PRE OUT output allows connection of an additional amplifier, expanding the sound system
- Dual microphone input: Priority input lowers music during announcements; includes an ECHO effect on both mics
- Illuminated LCD display: Shows operating status, volume, and real-time data
- Suitable for installation in a communications rack



### Specifications:

- Total power: 200W RMS + 100W Subwoofer
- Power per zone: 4Ω = 150W RMS | 8Ω = 100W RMS
- Number of zones: 2
- Subwoofer outputs: 2 active + 1 passive
- Frequency response: 20Hz-20kHz ±1dB
- Minimum impedance: 4Ω
- Total harmonic distortion (THD): <0.1% at standard listening levels
- Rack installation: 1U | 19" RACK
- Dimensions: 29x22x9.8 cm

## 100W 2-Zone Stereo Amplifier

- With Independent Volume Control for Each Zone; Subwoofer Output, and Optical Input
- 2 Active subwoofer outputs for wide and deep sound dispersion
- CLASS-D amplification
- Multiple connection options: BT / USB / AUX / FM RADIO / COAX / OPTICAL
- Smart DSP
- 2-band equalizer to control bass/treble
- PRE OUT output allows connection of an additional amplifier, expanding the sound system
- Dual microphone input: Priority input lowers music during announcements; includes an ECHO effect on both mics
- Illuminated LCD display: Shows operating status, volume, and real-time data



### Specifications:

- Total power: 100W RMS
- Power per zone: 4Ω = 75W RMS | 8Ω = 50W RMS
- Number of zones: 2
- Subwoofer output: 2 active
- Frequency response: 20Hz–20kHz ±1dB
- Minimum impedance: 4Ω
- Total harmonic distortion (THD): <0.1% at standard listening levels
- Dimensions: 29 × 22 × 9.8 cm

## 4 Zone Powered Amplifier with Sub Output (500W)

- Bluetooth Amplifier Stereo System, with Bluetooth, MP3 player, FM tuner
- Voice Priority Function
- Connect & Stream Audio from External Devices
- Digital LED Display Showing MP3/BT/FM Mode Playing Status
- 3.5mm Audio to Connect & Stream Audio from External Device
- 3.5mm Headphone Input with Separate Volume Control
- (2) 1/4" Microphone Input Jacks w/ MIC1 Talk-over Function
- USB Flash Drive & SD Memory Card Readers
- RCA Subwoofer Input with LPF control to boost the Bass Effect
- (4) Pairs of Push Type Speaker Output Connectors
- (1) One pair of Binding Post Connector for the Woofer output
- Built in Short Circuit and Over Voltage Protection
- Perfect for Home, Office School, Church or Business Use



### Specifications:

- 4 Zone Stereo Amplifier: 500W
- Power Output: 4x100W (for Zone)+ 100W (for Passive Subwoofer)
- Freq. Response: 40Hz-15kHz
- Resistance: 4Ω-8Ω
- Dimensions (L x D x H): 48.3 x 30 x 8.8 cm

## 4 X 200W Stereo PA Amplifier

- Fully featured PA amplifier with 2 independent stereo zone outputs and mixer section for 2 microphones and a stereo audio source. An inbuilt media player section offers playback of mp3 audio tracks...
- Independent stereo playback to 2 separate zones
- Media player with USB/SD playback
- FM radio tuner with external aerial connection
- Power consumption max.: 360W
- Fuse: F5A, 250V
- Output power rms: @ 4 Ohms 4 x 200W
- Output power rms: @ 8 Ohms 4 x 100W
- Amplifier: construction Class D
- Audio source: USB/SD mp3 playback, FM tuner, BT receiver
- Input controls: Aux, Media, Line1, Line2, Mic1, Mic2, Talkover
- Line output: 4 x RCA
- Thermal, over-current, over-voltage, short-circuit Protection.



# MAESTRA 4200

# Multi Zone Amplifiers 70/100V Line

## Maestra **AZ-2U-51000**

### 5-Zone Amplifier



2U

- Power: 1000W (RMS)
- Bluetooth
- Supports connection to DC-24V for backup battery operation
- 2 Speaker connection options: transformer or standard 4Ω-16Ω
- Bass and treble volume control
- CLASS AB amplifier
- 2 Mic inputs for PA
- Individual mic volume control
- AUX RCA input • USB / SD input
- RCA output for connecting an additional amplifier
- FM radio • Digital LED display

**Dimensions (cm):** 48.3 × 45 × 8.8

## Maestra **AZ-2U-5360**

### 5-Zone Amplifier



2U

- Power: 240W (RMS)
- Bluetooth
- Supports connection to DC-24V for backup battery operation
- 2 Speaker connection options: transformer or standard 4Ω-16Ω
- Bass and treble volume control
- CLASS AB amplifier
- 2 Mic inputs for PA
- Individual mic volume control
- AUX RCA input • USB / SD input
- RCA output for connecting an additional amplifier
- FM radio • Digital LED display
- Overheat protection mechanism

**Dimensions (cm):** 48.2 × 31 × 8.8

## Maestra **AZ-2U-5700**

### 5-Zone Amplifier



2U

- Power: 700W (RMS)
- Bluetooth
- Supports connection to DC-24V for backup battery operation
- 2 Speaker connection options: transformer or standard 4Ω-16Ω
- Bass and treble volume control
- CLASS AB amplifier
- 2 Mic inputs for PA
- Individual mic volume control
- AUX RCA input • USB / SD input
- RCA output for connecting an additional amplifier
- FM radio • Digital LED display

**Dimensions (cm):** 48.3 × 45 × 8.8

## Maestra **AZ-2U-5240**

### 5-Zone Amplifier



2U

- Power: 240W (RMS)
- Bluetooth
- Supports connection to DC-24V backup battery operation
- 2 Speaker connection options: transformer or standard 4Ω-16Ω
- Bass and treble volume control
- CLASS AB amplifier
- 2 Mic inputs for PA
- Individual mic volume control
- AUX RCA input • USB / SD input
- RCA output for connecting an additional amplifier
- FM radio • Digital LED display
- Overheat protection mechanism

**Dimensions (cm):** 48.3 × 35 × 8.8

## Maestra **AZ-2U-5500**

### 5-Zone Amplifier



2U

- Power: 500W (RMS)
- Bluetooth
- Supports connection to DC-24V for backup battery operation
- 2 Speaker connection options: transformer or standard 4Ω-16Ω
- Bass and treble volume control
- CLASS AB amplifier
- 2 Mic inputs for PA
- Individual mic volume control
- AUX RCA input • USB / SD input
- RCA output for connecting an additional amplifier
- FM radio • Digital LED display

**Dimensions (cm):** 48.2 × 31 × 8.8

## Maestra **AZ-2U-1120**

### 1-Zone Amplifier



2U

- Power: 120W (RMS)
- Bluetooth
- Supports connection to DC-24V backup battery operation
- 2 Speaker connection options: transformer or standard 4Ω-16Ω
- Bass and treble volume control
- CLASS AB amplifier
- 2 Mic inputs for PA
- Individual mic volume control
- AUX RCA input • USB / SD input
- RCA output for connecting an additional amplifier
- FM radio • Digital LED display
- Overheat protection mechanism

**Dimensions (cm):** 40 × 27 × 6.6

# WiFi Amplifiers

## QUANTUM A2100

### Premium WiFi Stereo Amplifier

#### Features:

- WiFi: IEEE802.11 b/g/n 2.4G
- LAN: 10/100M RJ45
- Bluetooth: 5.0
- Streaming Protocol: WiFi, AirPlay, Spotify Connect, DLNA, UPnP
- Audio Input: Optical, Coaxial, Mic, RCA, USB
- Online Music Services: Spotify, Amazon Music, Tidal, Qobuz, Tuneln, BBC Radio, Internet Radio, iHeart Radio, Radio Paradise, Napster.

#### Specifications:

Speaker Power  
Stereo: 100Wx2 @4Ω / 60W x2@8Ω  
Mono: 200W @2Ω  
Spekaer Impedance: 4 - 8Ω  
Amplifier Chip: TPA3255  
Frequency Response: 20Hz - 20kHz  
THD+N/SNR: 0.03% / 91dB  
DAC: ESS Sabre ES9023P



## QUANTUM W450

### 4 Zone Network Audio Amplifier

#### Features:

- Support 4 zone, 4\* 50W per Zone
- Support WiFi 2.4G, Bluetooth, Airplay
- Support built-in MIC function
- Support LINE IN, OPTICAL, HDMI, RCA, COXIAL, USB
- Support SUB out, speaker out, pre out
- Support 2\*LAN (10/100Mbps Ethernet access)
- Support the operation of each zone controlled by the PC, including the user EQ customization of each zone
- Support 4 zone broadcast and single zone broadcast
- Support APP interconnection control
- Support Spotify, Bluetooth multi-room playback
- Support DLNA, AirPlay, iHeartRadio, Spotify, TIDAL, Napster, Qobuz, Amazon Music, QQ music, Online Radio etc.
- 433Mhz remote control, Wireless Remote Control-360-degree direction signal technology-8M coverage

#### Specifications:

Power: AC 110-240V / 50/60Hz  
Control Interface: USB Type C  
Remote  
Size: 2U rack size



## QUANTUM W2100

### Hi-Fi WiFi Bluetooth Stereo Audio Amplifier

#### Features:

- Support Bluetooth 5.0, Aux in / HDMI ARC/ LAN / Optical Fiber input
- 2X100W(4Ω), DC 32V-5A
- Support WiFi 2.4G , network multi-room playback
- Support Line / Woofer / Optical fiber output
- Support Airplay, DLNA, iHeartRadio, Spotify, TIDAL, Napster, Qobuz etc.
- Support 24Bit, 192khz
- Equipped with full frequency stereo output

#### Specifications:

Audio Input: WiFi2.4G/Bluetooth 5.0/OPTICAL/AUX/HDMI  
Audio Output: SPEAKER R+L/headphone/Line/Optical/ Woofer  
Work Voltage: DC 32V-5A  
Output Power: 2X100W(4Ω)  
Frequency Response: 20Hz -20kHz  
Harmonic Distortion: 0.03%  
SNR: 95db  
Speaker impedance: 4-8Ω  
AUX output: 1Vrms (1Khz 0db)  
Fiber output: 0db (1Khz 0db)  
Product weight: 1.3kg  
Dimension: 19.8 × 15.3 × 4.6 cm



## QUANTUM W275

### Hi-Fi WiFi Bluetooth Stereo Audio Amplifier

#### Features:

- Support Bluetooth 5.0, Aux in / HDMI ARC/ LAN / Optical Fiber input
- 2X100W(4Ω), DC 32V-5A
- Support WiFi 2.4G , network multi-room playback
- Support Line / Woofer / Optical fiber output
- Support Airplay, DLNA, iHeartRadio, Spotify, TIDAL, Napster, Qobuz etc.
- Support 24Bit, 192khz
- Equipped with full frequency stereo output

#### Specifications:

Audio Input: WiFi2.4G/Bluetooth 5.0/OPTICAL/AUX/HDMI  
Audio Output: SPEAKER R+L/headphone/Line/Optical/ Woofer  
Work Voltage: DC 32V-5A  
Output Power: 2X100W(4Ω)  
Frequency Response: 20Hz -20kHz  
Harmonic Distortion: 0.03%  
SNR: 95db  
Speaker impedance: 4-8Ω  
AUX output: 1Vrms (1Khz 0db)  
Fiber output: 0db (1Khz 0db)  
Product weight: 1.3kg  
Dimension: 19.8 × 15.3 × 4.6 cm



### Features

- Wi-Fi protocol: IEEE 802.11 a/b/g/n/ac 1x1 dual band WiFi 2.4 GHz and 5GHz
- Bluetooth protocol: Bluetooth 5.4
- Support WiFi/Bluetooth/HDMI (ARC) input/U disk playback
- Support 10/100Mbps Ethernet access
- Support Line output / Lan output / Optical output
- Support APP interconnection control
- Support HTTP/HTTPS protocol
- Support Airplay/DLNA/Qplay streaming media protocol
- Support Airplay, App multi-room playback etc.
- Support Spotify, Tidal, Yandex Music, Youtube music, Apple Music, Qobuz, Tuneln, vTuner etc.
- Support common lossless audio format decoding, up to 192kHz/32bit format
- Support MP3/AAC/FLAC/ALAC/WMA/WAV/APE/AIF/AIFF/AIFC/OGG etc.
- Support NEC infrared remote control

### Specifications:

Audio input: Network / Bluetooth 5.4 / TV in / USB Disk

Audio output: Line out / Optical out / Lan out

Ethernet in: RJ45

Music sources: Streaming protocol, Online Music, Multiroom function.

Power: 5V- 2A

Frequency response: 20Hz-20kHz

HD: 0.03%

SNR: >95db

Dimension: 120 x 120 x 43 mm



## WiFi Wireless Audio Music Receiver 2.4G+ 5G version Airplay2

# QUANTUM WMB23

### Features:

- Support WiFi 2.4G & 5G / Bluetooth / AUX/ Optical fiber / LAN
- Support linkplay multi-room
- Support Airplay2, DLNA
- Streaming music from iHeartRadio, Spotify, TIDAL, Napster, Qobuz, Amazon Music, QQ music, Online Radio etc.

### Specifications:

- Power: 5V -1.5A
- Frequency: 20Hz-20kHz
- THD: 0.03%
- SNR: >95db
- Remote control



# Digital Stereo Amplifiers

## Digital Stereo Amplifier A/B with Subwoofer Output – 800W

### MAESTRA AV5026

- Powerful output: 800W RMS (4x200W); ideal for commercial and home installations
- Built-in or internal for all DSP processor delivers clean and balanced audio at any volume
- CLASS D amplifier: high efficiency with low heat dissipation
- Integrated Bluetooth wireless streaming from any compatible device
- Dual zone (A/B): allows you to manage two independent audio zones allows you to manage two independent audio zones Built-in FM radio
- Remote control allows for convenient operation of all functions
- Compact design suitable for electrical cabinets, shelf units, and cooling stations



#### Specifications:

Power: 4 channels x 200W RMS

Amplifier type: Class D with DSP processor

Microphone inputs: MIC1 and MIC2

Digital inputs: HDMI IN, HDMI OUT ARC, optical, coaxial, DAC

Analog inputs: PHONO, CD, AUX

Outputs: PRE OUT, AMP IN, Active Subwoofer Out

Frequency response: 20Hz – 20kHz

Total harmonic distortion (THD): <0.1% @ 1W

Maximum power consumption: 380W

FM antenna: built-in connector

Front panel controls: Source selection, Zone selection, Tone, Volume

Remote control: IR remote included

Operating voltage: 230V, 50Hz

Dimensions: H 6.5 cm x W 17.5 cm x D 27 cm

Weight: 1.4 kg

## Digital Stereo Amplifier A/B with Subwoofer Output - 400W

### MAESTRA AV5023

- LED display, Built in DSP system; With bass/treble/vol control; with independent 4-way power
- amplifier: A/B/A+B speaker output
- With bluetooth(5.0 version)/USB(DAC)/CD/AUX/Phono/ARC/Optical/Coaxial input(PCM), with 3.5mm headphone jack
- with pre-amp output and amplifier input interface
- USB socket compatible lossless music, APE/FLAC/WMA/MP3 playback
- Karaoke function anti-noise, mic vol/echo control/vocal cut, Microphone Priority
- with recording function(recording can be performed in AUX/CD/PHONO/BT/ARC to USB memory disc)
- With sub audio out for active subwoofer
- With FM radio
- full function remote control



#### Specifications:

Input Power: AC110-240V 50/60HZ

Rated Power: 400W (4\*100W)

S/N Ratio:>75dB

THD:S0.1%(1W)

Frequency Response:20Hz-20KHZ

Output Impedence: 4Ω -8Ω

Dimensions (WxDXH): 360 X 230 X 70 mm

Product Weight: (N.W. 2KG, G.W.3KG)

## Digital Stereo Receiver A/B with Subwoofer Output – 400W

### MAESTRA AV5022

- Powerful Output: 400W RMS (4 x 100W); ideal for both commercial and home installations
- Built-in DSP Processor delivers clean and balanced sound at any volume
- CLASS D amplifier: high energy efficiency with low heat emission
- Integrated Bluetooth wireless streaming from any compatible device
- Dual zone (A/B) allows you to manage two independent audio zones
- Built-in FM radio
- Remote control allows for convenient operation of all functions
- Compact design suitable for electrical cabinets, rack mounts, cooling stations, and more



#### Specifications:

Power Output: 4 x 100W RMS

Amplifier Type: Class D with DSP processor

Microphone Inputs: MIC1 & MIC2 (front panel)

Digital Inputs: Optical, Coaxial, DAC

Analog Inputs: PHONO, CD, AUX

Outputs: Speaker outputs A & B, active subwoofer output

Frequency Response: 20Hz – 20kHz

Total Harmonic Distortion (THD): <0.1% @ 1W

Power Consumption (Max): 180W

FM Antenna: Built-in connector

Front Panel Controls: Source selection, zone selection, tone, volume

Remote Control: IR remote included

Power Supply: 110V – 240V AC, 50/60Hz

Dimensions: 12 x 25 x 31.5 cm (H x W x D)

Weight: 1.4 kg

# Stereo Amplifiers

## Compact Stereo Amplifier MAESTRA AV2096

2.2 Channels 2 Channels (4Ω–8Ω) 2x500W



- Digital DSP circuit • Bluetooth
- Optical input
- FM radio
- Subwoofer output
- AUX, USB/FL3.5 Input
- Stereo RCA input
- RCA output allows you to chain an additional amplifier
- Digital display
- 2 Mic inputs (with voice priority)
- IR Remote control
- Bass and treble control
- Color: White

### Specifications:

Audio Power: 100W RMS  
 Frequency Response: 40Hz–20kHz ±3dB  
 Sensitivity: 93dB ±3dB  
 Impedance: 4Ω–8Ω  
 Copper Transformer  
 Product Dimensions: 249 × 190 × 88 mm  
 Warranty: 1 Year

### Dimensions (cm):

24.9 × 19 × 8.8

## Compact Stereo Amplifier MAESTRA AV2095

2.2 Channels 2.2 Channels (4Ω–8Ω) 2x50W



- Digital DSP circuit
- Bluetooth
- Optical input
- FM radio
- Subwoofer output
- AUX, USB/FL3.5 Input
- Stereo RCA input
- RCA output allows you to chain an additional amplifier
- Digital display
- 2 Mic inputs (with voice priority)
- IR Remote control
- Bass and treble control
- Color: Black

### Specifications:

Audio Power: 100W RMS  
 Frequency Response: 40Hz–20kHz ±3dB  
 Sensitivity: 93dB ±3dB  
 Impedance: 4Ω–8Ω  
 Copper Transformer  
 Product Dimensions: 249 × 190 × 88 mm  
 Warranty: 1 Year

### Dimensions (cm):

24.9 × 19 × 8.8

# Compact Stereo Amplifiers

## Professional Mini-Digital Amplifier with Built-in Mixer

MINIPRO-60 | 120

**Power:**  
60W | 120W

### Features:

- Advanced CLASS D digital amplifier: high energy efficiency and minimal heat dissipation
- Integrated mixer
- Backup function for PA announcements and music playback
- Suitable for use with line transformer speakers and high-quality
- Supports emergency systems; connection for emergency alerts
- Compact 1U design for space saving and easy installation
- Full sound adjustment with bass/treble control
- Expandable to an additional amplifier via PRE-OUT
- Flexible connectivity: BT, USB, RCA
- Three mic inputs (2 balanced XLR + 1 unbalanced)

### Specifications:

Power: 120W / 240W

### Audio outputs:

Constant voltage: 100V  
 Fixed impedance: 4Ω–16Ω

### Microphone inputs:

MIC1: unbalanced, 600Ω, 10mV  
 MIC2 / MIC3: balanced XLR, 600Ω, 10mV  
 Line inputs: AUX1 / AUX2 unbalanced, 10kΩ, 300mV  
 Auxiliary output: 0.775V (0dB)  
 Frequency response: 60Hz – 20kHz ±3dB  
 Total harmonic distortion (THD): <0.5% @ 1kHz



### Signal-to-noise ratio:

Line inputs: >80dB  
 Microphone inputs: >65dB  
 Output stability: <3dB difference between no-load and full-load

### Tone control:

Bass: 100Hz ±10dB  
 Treble: 10kHz ±10dB  
 Operating voltage: AC 100V–240V, 50/60Hz  
 Dimensions: 28.6 × 21.5 × 7 cm

## Slim 2 Zones A/B 8Ω Stereo Amplifier 2x80W

MAESTRA S280

- DSP pre-stage effector + switching power supply + CLASS D amplifier
- 3 effects can be saved, 3-band equalizer can be adjusted
- 1.5U aluminum alloy panel
- 4 digital signal inputs: Bluetooth, USB, optical fiber, FM
- 1 analog signal input: AUX
- 3 microphone inputs
- 1 music audio output, 2 SUB bass outputs
- AB channel volume can be adjusted independently



### Specifications:

Rated power: 2\*80W 8Ω, 2\*120W 4Ω  
 Frequency response: 20Hz-20KHz  
 Total harmonic distortion: ≤0.1%  
 Signal-to-noise ratio: ≥90dB  
 Input sensitivity: Music 250mv / Mic 30mv  
 Input impedance (unbalanced/balanced): 22KΩ  
 Gross weight: 4kg  
 Dimensions: 13.6 × 4.6 × 15 cm

## 4-Channel Stereo Amplifier (for Wall Mounting)

AMW-250



**Especially suitable for use in public spaces, commercial establishments, restaurants, meeting rooms, lobbies and offices, waiting areas, and service environments. Intended for use in creating a dynamic sound system with reliable control of mics/ amplifier performance.**

- PEAK indicator light alerts of excessive volume
- 2 COMBO inputs for LINE/MIC/PHANTOM support various audio sources
- LINE OUT output for chaining another amplifier to expand the system/create subzones
- 5 connection options: SD CARD / USB / RCA / AUX / BT
- Parametric equalizer for precise adjustment of bass and treble according to the speaker's capabilities
- Easy installation with detachable connectors for quick dis/connection from/to speakers
- Metal enclosure with lock (includes 2 copyable keys)
- Power: 50W per channel

## Professional 100W RMS Wall-Mount Stereo Amplifier

MAESTRA S250

- Professional stereo amplifier with 100W RMS premium-quality output
- Mic input, AUX input, digital optical input, and dedicated subwoofer output
- Bluetooth connectivity for direct music playback from mobile devices
- Support for direct playback from USB media
- Customizable EQ control with built-in equalizer
- Compact wall-mount design saves space and allows easy installation
- Precise control via smart DSP
- Multi-zone support: can be integrated into multi-room audio systems
- Convenient remote control via dedicated remote/compatible app

### Specifications:

Power Output: 100W RMS  
 Inputs Microphone: 3 mV-5 mV, AUX 200 mV-300 mV  
 Outputs: 2x75W @ 8Ω, 2x75W @ 4Ω  
 Frequency Response: 25 Hz-20 kHz ±3 dB  
 Equalizer Bass: 100 Hz ±10 dB, Treble 10 kHz ±10 dB  
 Total Harmonic Distortion (THD): ≤0.1% @ 1 kHz 0 dB output  
 Signal-to-Noise Ratio (SNR): ≥70 dB  
 Operating Voltage: DC-24 V / 3-A  
 Dimensions: 13.6 × 4.6 × 15 cm



# Public Address Amplifiers

## Compact Mixer Amplifier for Public Address and Music with 3 Audio Zones

### COMPACT-240

#### Integrated BT, and Mic Inputs



- Supports connection to DC-24V for battery operation, ideal for backup, portable use, use in vehicles, outdoor events, and areas without main power
- 2 Mic inputs with echo effect
- Bell tone input for announcement of important messages
- AUX input/output (RCA) for easy connection to external audio sources
- USB player, BT, and FM radio combine to offer multiple playback options
- Built-in treble, and bass, and master volume controls
- Overload, overheating, and short-circuit protection
- Smart LED display runs 5-segment meter for monitoring output level, including clip and fault indicators
- Dual-zone output supports up to 100V perfect for distributing audio to multiple zones

#### Specifications:

Power at V001: 240W  
 Output power at 4 : 240W  
 Frequency response: 50Hz–16kHz ±1dB  
 DHT distortion: <0.1% at normal volume  
 Impedance range: 4Ω–16Ω  
 Microphone input: 10mV, 600Ω

#### Dimensions (cm):

8 × 28.5 × 38 cm

## Compact Mixer Amplifier for PA and Music with 2 Audio Zones,

### COMPACT-120

#### Integrated BT, and Mic Inputs



- Supports DC-24V for battery operation ideal for backup, portable use, use in vehicles, outdoor events, and areas without main power
- 2 Mic inputs with echo effect included
- Bell tone input for announcement of important messages
- AUX input/output (RCA) for easy connection to external audio sources
- USB player, BT, and FM radio combine to offer multiple playback options
- Built-in treble, bass, and master volume controls
- Overload, overheating, and short-circuit protection
- Smart LED display runs 5-segment meter for monitoring output level, including clip and fault indicators
- Dual-zone output supports up to 100V perfect for distributing audio to multiple zones

#### Specifications:

Output power V001: 120W  
 Output power at 4Ω: 120W  
 Frequency response: 50Hz–16kHz ±1dB  
 DHT distortion: <0.1% at normal volume  
 Impedance range: 4Ω–16Ω  
 Microphone input: 10mV, 600Ω

#### Dimensions (cm):

8 × 26.5 × 32 cm

## Compact Mixer Amplifier for PA and Music, with 2 Audio Zones

### COMPACT-60

#### Integrated BT, and Mic Inputs



- Supports DC-24V for battery operation ideal for backup, portable use, use in vehicles, outdoor events, and areas without main power
- 2 Microphone inputs with echo effect included
- Bell tone input for announcement of important messages
- AUX input/output (RCA) for easy connection to external audio sources
- USB player, BT, and FM radio combine to offer multiple playback options
- Built-in treble, bass, and master volume controls
- Overload, overheating, and short-circuit protection
- Smart LED display runs 5-segment meter for monitoring output level, including clip and fault indicators
- Dual-zone output supports up to 100V perfect for distributing audio to multiple zones

#### Specifications:

Power at V001: 60W  
 Output power at 4Ω: 60W  
 Frequency response: 50Hz–16kHz ±1dB  
 THD distortion: <0.1% at normal volume  
 Impedance range: 4Ω–16Ω  
 Microphone input: 10mV, 600Ω

#### Dimensions (cm):

8×24×32 cm

# In-Wall Amplifiers

## JOLT-PROW225S

### In-Wall Music Player With Wi-Fi 4" Touch Screen

- Output Power: 25\*4W
- Cortex 1.2G quad-core CPU with Android 10.0 system.
- Support DLNA, Airplay, Qplay, and other protocols, you can push mobile phone music, videos, pictures, files, and APK to the host for playback or installation.
- 4" multi-touch capacitive screen, 480\*480 IPS HD resolution display.
- Scene linkage, automatic playback of music, regular playback of music.
- Support Amazon Alex voice control.
- Connect Eshare applications to support remote control of mobile devices such as mobile phones and pads. Turn the mobile device into a wireless mouse, flying squirrel, wireless trackpad, remote control, wireless keyboard, wireless camera, and the same screen mirroring.
- 4 channel speaker output, can connect up to 4 speakers.
- Bluetooth: Support external Bluetooth devices such as mobile phones to achieve audio playback.
- Support customized Bluetooth name and PIN directly in the device.
- Wi-Fi wireless connection and Ethernet connection.
- Support multi-languages as a setting.
- Support audio input and audio output function.
- Support multi-level timing switch function, time setting, and optional timing to start default songs for playback;
- Support TF card and MICRO-USB interface, USB can be the external hard drive.

- Support infrared remote control, distance 8 to 10 meters.
- Video format support: MPEG1-, MPEG2-, MPEG4-, H.263, H.264, AVS, VC1-, RV, VP6/MP8, SorensonSpark, MVC,3GP, AVI, MKV, WMV, MPG, VOB, FLV, SWF, MOV.
- Support playback of audio files in various formats: MP3, AAC, FLAC, WAV, APE.
- Setting: Basic, Network, Display, Time, Input, System.



### In-Wall Music Player With Touch Button

## JOLT-425D

- Output Power: 4 \*20W
- Audio format: support MP3, WAV, APE and other audio formats.
- Bluetooth function: support pairing of mobile phones and other external Bluetooth devices to achieve audio playback.
- External sound input: Support external sound source input to this machine, amplified output.
- Memory card function: externally inserted TF card, maximum support 32GB TF card.
- U disk storage function: plug-in U disk, maximum support 32GB U disk.
- Volume adjustment: 15-level electronic volume adjustment function.
- Power-off memory function: remember the state of playing before the last power-off.
- Infrared remote control function: provides various shortcut keys and humanized operation.
- 485: Support the central control device to communicate with the host through 485. (optional)
- Support power-on playback.
- Support Bluetooth name and password modification.
- Color: Black/White/Gold



### In-Wall Music Player With Touch Key

## JOLT-220

- Bluetooth function: support external Bluetooth devices such as mobile phones for audio playback.
- Support Multiple External Audio inputs: AUX, Bluetooth, and TF card
- Support departure doorbell
- Two way Blue-tooth (received and send)
- Power: AC110V-250V(50HZ)
- Output Power: 2 \*25W
- Expand TF card memory: 32GB
- Output impedance: 4-8Ω
- FM Frequency: 87.5Hz-108MHz
- Audio S/N ratio:≥98db
- Bluetooth distance: 10m
- Infrared remote control distance: 8-10m
- Dimensions (cm): 11 x 86 x 86 mm





## Digital Power Amplifiers

Designed for installation in 2U rack cabinets

### Professional PA Amplifier

**PAB-2700**

**2 Channels, 2x700W at 4Ω**



- Power per channel: 850W / 700W / 400W (2Ω / 4Ω / 8Ω)
- Power in BRIDGE MONO: 1200W 8Ω / 1600W 4Ω
- Amplifier type: CLASS AB
- Channels: 2
- Frequency response: 20Hz–20kHz
- THD (8Ω, 1kHz): >0.05%

- S/N Ratio: <98dB
- Dimensions (W/H/D): 49 × 9 × 41 cm
- Weight: 13 kg
- Indicator lights: Signal, FAULT, Power, CLIP
- XLR / SPEAKON
- Includes metal component for rack installation

### Professional PA Amplifier **PAB-2350**

**2 Channels, 2x350W at 4Ω**



- Power per channel: 450W / 350W / 200W (2Ω / 4Ω / 8Ω)
- Power in BRIDGE MONO: 600W 8Ω / 800W 4Ω
- Amplifier type: CLASS AB
- Channels: 2
- Frequency response: 20Hz–20kHz
- THD (8Ω, 1kHz): >0.05%
- S/N Ratio: <98dB
- Dimensions (W/H/D): 48 × 9 × 41 cm
- Weight: 12 kg
- Indicator lights: Signal, FAULT, Power, CLIP
- XLR / SPEAKON
- Includes metal component for rack installation



## 4CH Power Amplifier Class D (digital) 4x350W

**BLITZ-4350**



### Features:

- Metal body, standard 1U thickness / 420MM width, thin but strong/lightweight design.
- Intelligent protection: clipping voltage limit/overload protection/overheating protection/short circuit protection/DC protection.
- Fast cooling of internal electrical Circuit and Ultra-quiet intelligent variable speed fan.

### Specifications:

- Input Sensitivity: 0.775V
- Input Impedance: 20K $\Omega$  (balanced), 10K $\Omega$  (unbalanced)
- Frequency response: 20Hz-20kHz ( $\pm 0.5$ dB)
- Slew rate:  $\geq 30$ V/US
- Damping factor:  $\geq 800$
- Crosstalk:  $>60$ dB@/1KHz
- S/N:  $>100$ dB
- Total harmonic distortion (THD+N):  $<0.01\%$  8  $\Omega$
- Output Power: 350Wx2 @8 $\Omega$ , 500Wx2 @4 $\Omega$

## 2CH Power Amplifier Class D (digital) 2x350W

**BLITZ-2350**



### Features:

- 2 Ports (CHANNEL 2) connection to 2 speakers
- Amplification of up to 350W. Each speaker is stably connected for an extended period
- Indicator lights for Signal FAULT, Power, and -CLIP
- Class AB amplifier, 0.775/1/1.4V efficiency
- Damping Factor: 200
- 2 $\Omega$  /FTC 20Hz-20KHz @0.5% THD: 2x450W
- 4 $\Omega$  /FTC 20Hz-20KHz @0.5% THD: 2x350W
- 8 $\Omega$  /FTC 20Hz-20KHz @0.5% THD: 2x200W BRIDGED (SINGAL CHANNEL)
- 4 $\Omega$  /FTC 20Hz-20KHz @0.5% THD: 800W
- 8 $\Omega$  /FTC 20Hz-20KHz @0.5% THD: 600W
- Cooling System: Front to rear
- Protection: Short circuits, Overload, Limiter.

### Specifications:

- Input Sensitivity: 0.775V
- Input Impedance: 20K $\Omega$  (balanced), 10K $\Omega$  (unbalanced)
- Frequency response: 20Hz-20kHz ( $\pm 0.5$ dB)
- Slew rate:  $\geq 30$ V/US
- Damping factor:  $\geq 800$
- Crosstalk:  $>60$ dB@/1KHz
- S/N:  $>100$ dB
- Total harmonic distortion (THD+N):  $<0.01\%$  8  $\Omega$
- Output Power: 350Wx2 @8 $\Omega$ , 500Wx2 @4 $\Omega$

## 2CH Power Amplifier Class D (digital) 2x600W

**BLITZ-600**



### Features:

- Switching power supply, Class D digital audio power amplifier.
- The metal body is designed according to the standard 1U height /420mm width, which is thin, strong, and lightweight
- Intelligent protection: clipping voltage limit/ overload protection/ overheat protection/ short circuit protection/ DC protection.
- The bottom of the internal circuit is hot, Rapid cooling.
- Input port: XLR input port
- Output port: speaker XLR port

### Specifications:

- Input Sensitivity: 0.775V
- Input Impedance: 20K $\Omega$  (balanced, Stereo), 10K $\Omega$  (unbalanced, parallel)
- Frequency response: 20Hz-20kHz ( $\pm 0.5$ dB @8 $\Omega$ , 1W)
- Slew rate:  $\geq 30$ V/US
- Damping factor:  $\geq 800$
- Crosstalk:  $>60$ dB@/1KHz
- S/N:  $>100$ dB
- Total harmonic distortion (THD+N):  $<0.01\%$  8 $\Omega$ , 1W@1KHz
- Inert-modulation distortion (IMD):  $<0.03\%$  8 $\Omega$ , @1KHz
- Output Power: 600Wx2 @8 $\Omega$ , 700Wx2 @4 $\Omega$

## 2CH Power Amplifier class D (digital) 2x400W

**BLITZ-400**



### Features:

- Switching power supply, Class D digital audio power amplifier.
- The metal body is designed according to the standard 1U height /420mm width, which is thin, strong, and lightweight
- Intelligent protection: clipping voltage limit/ overload protection/ overheat protection/ short circuit protection/ DC protection.
- The bottom of the internal circuit is hot, Rapid cooling.
- Input port: XLR input port
- Output port: speaker XLR port

### Specifications:

- Input Sensitivity: 0.775V
- Input Impedance: 20K $\Omega$  (balanced, Stereo), 10K $\Omega$  (unbalanced, parallel)
- Frequency response: 20Hz-20kHz ( $\pm$ 0.5dB @8 $\Omega$ , 1W)
- Slew rate:  $\geq$ 30V/US
- Damping factor:  $\geq$ 800
- Crosstalk: >60dB@/1KHz
- S/N: >100dB
- Total harmonic distortion (THD+N): <0.01% 8 $\Omega$ , 1W@1KHz
- Inert-modulation distortion (IMD): <0.03% 8 $\Omega$ , @1KHz
- Output Power: 400Wx2 @8 $\Omega$ , 500Wx2 @4 $\Omega$

## 2CH Power Amplifier class D (digital) 2x150W

**BLITZ-150**



### Features:

- Switching power supply, Class D digital audio power amplifier.
- The metal body is designed according to the standard 1U height /420mm width, which is thin, strong, and lightweight
- Intelligent protection: clipping voltage limit/ overload protection/ overheat protection/ short circuit protection/ DC protection.
- The bottom of the internal circuit is hot, Rapid cooling.
- Input port: XLR input port
- Output port: speaker XLR port
- Power supply input voltage is universal: AC 100v-240v input voltage is universal.

### Specifications:

- Input Sensitivity: 0.775V
- Input Impedance: 20K $\Omega$  (balanced, Stereo), 10K $\Omega$  (unbalanced, parallel)
- Frequency response: 20Hz-20kHz ( $\pm$ 0.25dB)
- Slew rate:  $\geq$ 30V/US
- Damping factor:  $\geq$ 800
- Crosstalk: >60dB@/1KHz
- S/N: >100dB
- Total harmonic distortion (THD+N): <0.01% 8 $\Omega$ , 1W@1KHz
- Inert-modulation distortion (IMD): <0.03% 8 $\Omega$ , @1KHz
- Output Power: 150Wx2 @8 $\Omega$



## Professional Power Mixer Amplifiers

### 2Ω Professional 2-Channel Mixer Amplifier

PMX-2300 | 2500 | 2700

Bluetooth | USB | Microphone Input | CLASS AB Amplification

8Ω - 4Ω - 2Ω

PMX-2300 | PMX-2500 | PMX-2700

Stereo output power 8Ω:	2x200W	2x300W	2x400W
Stereo output power 4Ω:	2x300W	2x500W	2x700W
Stereo output power 2Ω:	2x500W	2x800W	2x1000W
Bridge mono output 8Ω:	600W	1000W	1250W
Bridge mono output 4Ω:	1000W	1300W	1700W

Amplifier Type: CLASS AB

Channels: 2

Frequency Response: 20 Hz–18 kHz

THD: (8Ω 1 kHz) >0.03%

S/N Ratio: <90 dB

Weight: 10.5 kg

Indicator LEDs: Signal, FAULT, Power, CLIP

Inputs: BT, MIC, USB, XLR

Outputs: XLR, SPEAKON

Dimensions (H/W/D): 8.8 × 48 × 40 cm



### 2Ω Professional 2-Channel Mixer Amplifier

PMX-21050

Bluetooth | USB | Microphone Input | CLASS H Amplification

**CLASS H**

8Ω - 4Ω - 2Ω

Power per Channel: 1400 W / 1050 W / 600 W @ 2Ω / 4Ω / 8Ω

Bridge Mono Power: 1750 W @ 8Ω / 2300 W @ 4Ω

Amplifier: Type CLASS H

Channels: 2

Frequency Response: 20 Hz–18 kHz

THD: (8Ω 1 kHz) >0.03%

S/N Ratio: <95 dB

Weight: 13 kg

Indicator LEDs: Signal, FAULT, Power, CLIP

Inputs: BT, MIC, USB, XLR

Outputs: XLR, SPEAKON

Dimensions (H/W/D): 8.8 × 48 × 46 cm



**with Built-in Mixer**

**Power:**

120W | 240W | 360W | 480W | 660W

**Features:**

- Advanced Class D digital amplifier in a compact 1U design Integrated mixer and ALARM function for PA announcements and music playback
- Suitable for extended commercial use with line transformer speakers Dual functionality as a passive subwoofer-amplifier for deep and precise bass
- Advanced protection with smart circuits and built-in safety mechanisms against short circuits, overload, and high temperature Full sound adjustment with separate bass and treble control Expandable with an additional amplifier via PRE-OUT Various connectivity options: BT, USB, RCA Three microphone inputs (including balanced XLR connection)

**Specifications:**

Power Output: 120W / 240W / 360W / 480W / 660W

**Audio Outputs:**

100V constant voltage

Fixed impedance: 8Ω–16Ω

**Microphone Inputs:**

MIC1 / MIC2: Unbalanced, 600Ω, 10mV

MIC3: Balanced (XLR), 600Ω, 10mV

Line Inputs: AUX1 / AUX2: Unbalanced, 10kΩ, 300mV

Auxiliary Output: 0.775V (0dB)

Frequency Response: 60Hz – 20kHz (±3dB)

Total Harmonic Distortion (THD): <0.5% at 1kHz, with 1/3 nominal load



**Signal-to-Noise Ratio (SNR):**

Line inputs: >80dB

Microphone inputs: >65dB

Output Stability: <3dB difference between static and full load

**Tone Control:**

Bass: 100Hz (±10dB)

Treble: 10kHz (±10dB)

Power Supply: AC 100V–240V, 50/60Hz

Dimensions (WxDxH): 48.2 × 20.7 × 5 cm

# Digital Multi Zone Amplifiers

## 8 Zones Power Amplifier

## MAESTRA A8

### Class D (Digital) 8\*100W



#### Features:

- Multi-zone amplifiers with 2 microphone inputs and a switchable stereo input for each zone. An inbuilt media player section offers playback of mp3 audio tracks from USB drive or SD card
- Available with 3 or 4 independent stereo outputs
- Media player with USB/SD playback
- FM radio tuner with external aerial connection
- Power consumption max.: 720W
- Fuse: F5A, 250V
- Amplifier: construction Class D
- Audio source: USB/SD mp3 playback, FM tuner, BT receiver
- Input controls: Aux, Media, Line1, Line2, Mic1, Mic2, Talkover
- Line output: 6 x RCA
- Thermal, over-current, over-voltage, short-circuit Protection.

#### Specifications:

- Output power: RMS 8x200W@4Ohm RMS 8X100W@8Ohm
- Frequency response: 20Hz -20kHz
- Input impedance: 20k Ohms (balanced), 10k Ohms (unbalanced)
- Speaker outputs: 4mm binding posts (8 channels)
- Dimensions: 482 x 300 x 88mm

## 6 Zones Power Amplifier

## MAESTRA A6

### Class D (Digital) 6\*100W



#### Features:

- Multi-zone amplifiers with 2 microphone inputs and a switchable stereo input for each zone. An inbuilt media player section offers playback of mp3 audio tracks from USB drive or SD card
- Available with 3 or 4 independent stereo outputs
- Media player with USB/SD playback
- FM radio tuner with external aerial connection
- Power consumption max.: 540W
- Fuse: F5A, 250V
- Amplifier: construction Class D
- Audio source: USB/SD mp3 playback, FM tuner, BT receiver
- Input controls: Aux, Media, Line1, Line2, Mic1, Mic2, Talkover
- Line output: 6 x RCA
- Thermal, over-current, over-voltage, short-circuit Protection.

#### Specifications:

- Output power: RMS 6x200W@4Ohm RMS 6X100W@8Ohm
- Frequency response: 20Hz -20kHz
- Input impedance: 20k Ohms (balanced), 10k Ohms (unbalanced)
- Speaker outputs: 4mm binding posts (6 channels)
- Dimensions: 482 x 300 x 88mm

## 4 Zones Power Amplifier

## MAESTRA A4

### Class D (Digital) 4\*100W



#### Features:

- Fully featured PA amplifier with 2 independent stereo zone outputs and mixer section for 2 microphones and a stereo audio source. An inbuilt media player section offers playback of mp3 audio tracks...
- Independent stereo playback to 2 separate zones
- Media player with USB/SD playback
- FM radio tuner with external aerial connection
- Power consumption max.: 360W
- Fuse: F5A, 250V
- Amplifier: construction Class D
- Audio source: USB/SD mp3 playback, FM tuner, BT receiver
- Input controls: Aux, Media, Line1, Line2, Mic1, Mic2, Talkover
- Line output: 4 x RCA
- Thermal, over-current, over-voltage, short-circuit Protection.

#### Specifications:

- Output power: RMS 4x200W@4Ohm RMS 4X100W@8Ohm
- Frequency response: 20Hz -20kHz
- Input impedance: 20k Ohms (balanced), 10k Ohms (unbalanced)
- Speaker outputs: 4mm binding posts (4 channels)
- Dimensions: 482 x 260 x 88mm

## 2 Zones Power Amplifier

## MAESTRA A2

### Class D (Digital) 2\*100W



#### Features:

- Fully featured stereo amplifier with mixer section for 2 microphones and a stereo audio source. An inbuilt media player section offers playback of mp3 audio tracks from USB drive or SD card and also...
- Bluetooth receiver
- Media player with USB/SD playback
- FM radio tuner with external aerial connection
- Power consumption max.: 280W
- Fuse: F5A, 250V
- Amplifier: construction Class D
- Audio source: USB/SD mp3 playback, FM tuner, BT receiver
- Input controls: Aux, Media, Line1, Line2, Mic1, Mic2, Talkover
- Line output: 2 x RCA
- Protection: Thermal, over-current, over-voltage, short-circuit

#### Specifications:

- Output power: RMS 2x200W@4Ohm RMS 2X100W@8Ohm
- Frequency response: 20Hz -20kHz
- Input impedance: 20k Ohms (balanced), 10k Ohms (unbalanced)
- Speaker outputs: 4mm binding posts (2 channels)
- Dimensions: 482 x 260 x 88mm

# Power Amplifiers

## FORGE D1U480

### 1U Rack-Mounted Constant Voltage

#### Multimedia Power Amplifier (480W)

##### Features:

- This amplifier features full protection circuitry, including output short-circuit, DC, and overheat protection.
- Built with a sleek black brushed aluminum panel, it offers both 100V constant voltage and 8–16 $\Omega$  constant impedance outputs.
- Powered by high-efficiency Class D amplification, it delivers strong output with minimal heat.
- Designed for small to mid-sized public broadcasting systems, it includes four bright LED level meters and precise audio controls - master volume, individual channel volumes, and independent bass/treble adjustment.
- With a 1.4" LCD display.
- With five input channels (3 MICs, 2 LINES), built-in Bluetooth, USB playback, and auto-play functionality, it supports diverse media needs.
- The internal circuit adopts STM SMD



##### Specifications:

- Rated output power: 480W
- AUX Output: 0.775V (0dB)
- Frequency Response: 60Hz-20KHz
- Nonlinear Distortion: <0.5%at 1KHz, 1/3 of rated output power
- S/N: Line>80dB, MIC>65dB
- Indicator: Power supply: PW, Level indication: -20, -10, -3, CLIP
- Power Supply: AC100V~AC240V 50~60Hz
- Dimensions: 48 x 28 x 4.5 cm

## FORGE D1U120

### 1U Rack-Mounted Constant Voltage

#### Multimedia Power Amplifier (120W)

##### Features:

- This amplifier features full protection circuitry, including output short-circuit, DC, and overheat protection.
- Built with a sleek black brushed aluminum panel, it offers both 100V constant voltage and 8–16 $\Omega$  constant impedance outputs.
- Powered by high-efficiency Class D amplification, it delivers strong output with minimal heat.
  - Designed for small to mid-sized public broadcasting systems, it includes four bright LED level meters and precise audio controls - master volume, individual channel volumes, and independent bass/treble adjustment.
- With a 1.4" LCD display.
- With five input channels (3 MICs, 2 LINES), built-in Bluetooth, USB playback, and auto-play functionality, it supports diverse media needs.
- The internal circuit adopts STM SMD



##### Specifications:

- Rated output power: 120W
- AUX Output: 0.775V (0dB)
- Frequency Response: 60Hz-20KHz
- Nonlinear Distortion: <0.5%at 1KHz, 1/3 of rated output power
- S/N: Line>80dB, MIC>65dB
- Indicator: Power supply: PW, Level indication: -20, -10, -3, CLIP
- Power Supply: AC100V~AC240V 50~60Hz
- Dimensions: 48 x 20 x 4.5 cm

# Professional Mixers

## FUSION 4C

### 4-Channel Artist Mixer

DSP processor with 61 built-in effects | Equalizer | Bass | BT | Recording mode | Headphone output | Volume control via fader

- 2 Mono channels with COMBO input; 1 stereo channel (via 2 PL inputs)
- GAIN control to adjust microphone/instrument impedance and sensitivity
- HI-Z switch for high-impedance instrument connection
- 3-band parametric equalizer for each channel (High/Mid/Low)
- LOW CUT switch to filter out low frequencies
- USB input for playback, recording, and computer connection
- Power supplied from computer or portable charger (not included)
- PHANTOM POWER + V84 switch for condenser microphones
- PEAK indicator LED to warn of excessive volume
- Digital LED display for mixer status
- PAN-control to balance audio between left and right channels



### 6-Channel Artist Mixer

DSP processor with 61 built-in effects | Equalizer | Bass | BT | Recording mode | Headphone output | Volume control via fader

- 4 Mono channels with COMBO input; 1 stereo channel (via 2 PL inputs)
- GAIN control to adjust microphone/instrument impedance and sensitivity
- HI-Z switch for high-impedance instrument connection
- 3-band parametric equalizer for each channel (High/Mid/Low)
- LOW CUT switch to filter out low frequencies
- USB input for playback, recording, and computer connection
- Power supplied from computer or portable charger (not included)
- PHANTOM POWER + V84 switch for condenser microphones
- PEAK indicator LED to warn of excessive volume
- Digital LED display for mixer status
- PAN-control to balance audio between left and right channels

## FUSION 6C





Hear the  
happiness



## Outdoor Speakers

### Outdoor Powered Speakers with TWS (pair)

### CALISTO 6



IP-X6

TWS

#### Specifications:

Bluetooth: CSR3008 V5.0  
 Power: 125W RMS  
 Woofer: 6.5"  
 Tweeter: 1" Mylar Dome  
 Impedance: 8Ω  
 Frequency Response: 55Hz-20kHz ±3dB  
 Sensitivity: 89dB ±3dB

**Dimensions (cm):** 19 × 25.6 × 22.5

#### Features:

- 120x2W speaker
- Dynamic Hi-Fi sound
- New CSR 5.0 Bluetooth streams music at the highest, clearest quality, without distortion or delays
- TWS: Wirelessly connect 2 speakers to a single audio source for a surround-sound experience
- Water-resistant, IPX6 certified; suitable for all weather conditions, including rain, humidity, and sunlight
- Separate bass, treble, and master volume controls for precise sound adjustment
- AUX input for wired connection (smartphones, TVs, set-top boxes, etc.)
- Sealed rear covers protect against water ingress
- UV-protective coating preserves the speaker's finish indefinitely
- Rust-proof aluminum grill
- Adjustable mounting bracket
- Easy installation
- Available in black and white
- Remote control included

**Connect 4 speakers to a single zone!**



Outdoor Sphere light with bluetooth speaker



Features:

- IPX6 waterproof rated
- Full range speaker with 30-40W output
- Stable structure can stand on the floor
- Cool RGB light
- Wireless bluetooth
- Built in battery,easy operation
- Long distance connection, ≥10m
- This is the version of floor standing

Specifications:

IP Rating: IPX6  
 Amplifier: digital amplifier 15-20W  
 Battery:3000mAh/7.4V  
 Frequency res: 50Hz-20KHz  
 Bluetooth: Action 8235P (Multi-connections)  
 Impedence: 4Ω  
 Product weight: 2-3KG  
 Sensitivity: 89dB ±3dB  
 Driver size: 6.5"full range speaker  
 Dimensions (HxWxD): φ350mm  
 7 colors RGB light

6" Water-Resistant Speaker: Indoor/Outdoor

BLYSS V6

Indoor/outdoor speaker with a luxurious design, BASS REFLEX, and aluminum grill for long-lasting durability in harsh conditions. Delivers precise sound in all spaces. Ideal for projects requiring rich, deep sound in public areas, off balconies, in restaurants, VIP rooms, hospitality venues, and more.



- 2-Way speaker with 6" woofer and 1" tweeter
- Durable enclosure with a transparent UV-resistant coating that preserves the original color for years
- Speaker with stainless aluminum grill, rated IP65 for all weather conditions
- Easy installation with multi-directional mounting bracket (included)
- BASS REFLEX design for enhanced bass frequencies and rich sound

Specifications:

Power: 185W  
 Frequency Response: 40Hz-20kHz ±3dB  
 Impedance: 8Ω  
 Sensitivity: 92dB  
 Dimensions (cm): 22 × 29.5 × 17  
 Weight: 3.6 kg  
 Finish: Black or white

5" Water-Resistant Speaker: Indoor/Outdoor

BLYSS V5

Indoor/outdoor speaker with a luxurious design, BASS REFLEX, and aluminum grill for long-lasting durability in harsh conditions. Delivers precise sound in all spaces. Ideal for projects requiring rich, deep sound in public areas, off balconies, in restaurants, VIP rooms, hospitality venues, and more.



- 2-Way speaker with 5" woofer and 1" tweeter
- Durable enclosure with a transparent UV-resistant coating that preserves the original color for years
- IP65 for all weather conditions
- Easy installation with multi-directional mounting bracket (included)
- BASS REFLEX design for enhanced bass frequencies and rich sound

Specifications:

Power: 155W  
 Frequency Response: 50Hz-20kHz ±3dB  
 Impedance: 8Ω  
 Sensitivity: 90dB  
 Dimensions: 18.5 × 24.2 × 14.5 cm  
 Weight: 2.2 kg  
 Finish: Black or White

4" Water-Resistant Speaker: Indoor/Outdoor

BLYSS V4

Indoor/outdoor speaker with a luxurious design, BASS REFLEX, and aluminum grill for long-lasting durability in harsh conditions. Delivers precise sound in all spaces. Ideal for projects requiring rich, deep sound in public areas, off balconies, in restaurants, VIP rooms, hospitality venues, and more.



- 2-Way speaker with 4" woofer and 1" tweeter
- Durable enclosure with a transparent UV-resistant coating that preserves the original color for years
- IP65 for all weather conditions
- Easy installation with multi-directional mounting bracket (included)
- BASS REFLEX design for enhanced bass frequencies and rich sound

Specifications:

Power: 125W  
 Frequency Response: 55Hz-20kHz ±3dB  
 Impedance: 8Ω  
 Sensitivity: 89dB  
 Dimensions: 16.5 × 21.2 × 13.5 cm  
 Weight: 2 kg  
 Finish: Black or White

**8" Outdoor Oval Passive Speaker (pair)**



**Features:**

- IP44 resistant to all weather conditions strong sun, moisture, rain, and more
- 2-Way speaker
- 8" woofer, adapted for playing music in open areas and large spaces
- Gilded terminal wrapped in plastic to prevent corrosion
- Easy installation both horizontal and vertical (accessories included)
- Available in black or white finish
- Available with transformer

**Specifications:**

Power Output: 200W  
 Frequency Response: 45Hz-20KHz  
 Sensitivity: 90dB±2dB  
 Impedance: 8Ω  
 Woofer: 8" Polypropylene  
 Tweeter: 1" Mylar  
 Product Dimensions: 36x24x25.4 cm

**BLYSS 605**

**5" Outdoor Oval Passive Speaker (pair)**



**Features:**

- IP44 resistant to all weather conditions strong sun, moisture, rain, and more
- 2-Way speaker
- 5" woofer, adapted for playing music in open areas and large spaces
- Gilded terminal wrapped in plastic to prevent corrosion
- Easy installation both horizontal and vertical (accessories included)
- Available in black or white finish
- Available with transformer

**Specifications:**

Power Output: 150W  
 Frequency Response: 60Hz-20KHz  
 Sensitivity: 89dB±2dB  
 Impedance: 8Ω  
 Woofer: 5" Polypropylene  
 Tweeter: 1" Mylar  
 Product Dimensions: 25.6x16.7x21.8 cm

**BLYSS 603**

**100W Oval Satellite Speaker – Indoor/Outdoor**

**ARCHITECT CHOICE!**  
**IP-44**



- Stylish 2-Way Oval Speaker
- Amazing sound: 150W power and 8Ω per speaker
- Mounting brackets that allow for full movement and optimal positioning included
- Cloth-covered grill for a smooth, warm appearance,
- Available in white or black finish
- Available with transformer

**Specifications:**

Power: 100W  
 Woofer: 3" Polypropylene  
 Tweeter: 0.75" Mylar  
 Impedance: 8Ω  
 Frequency Response: 45Hz–20kHz ±3dB  
 Sensitivity: 90dB ±3dB

**Dimensions (cm):**

(W) 11, (H) 16, (D) 11.7

**6.5" 150W Speaker – Indoor/Outdoor**



**IP-55**

**DIAMOND GRILL**

- IP55 rating: resistant to all weather conditions strong sunlight, humidity, rain, and more
- 2-Way speaker with a woofer designed for music playback in open spaces and large areas
- Rust-proof, diamond-patterned aluminum grill
- Plastic-coated terminal prevents corrosion
- Easy installation
- Vertical or horizontal mounting (mounting brackets included)
- Available in black or white finish

**Specifications:**

Power: 150W RMS  
 Woofer: 6.5"  
 Tweeter: 0.5"  
 Impedance: 8Ω  
 Sensitivity: 88dB ±3dB  
 Frequency Response: 60Hz–20kHz ±3dB

**Dimensions (cm):**

Frame: (H) 30.8 × (W) 21.3 × (D) 19.1  
 With Mounting Bracket: (H) 31.95 × (W) 21.3 × (D) 23.06

**BLYSS 06**

## 5.25" 125W Speakers – Indoor/Outdoor (pair)

**BLYSS 05**



- IP55 rating: resistant to all weather conditions, strong sunlight humidity, rain, and more
- 2-Way speakers
- Woofer designed for music playback in open spaces and large areas
- Rust-proof, diamond-patterned aluminum grill
- Plastic-coated terminal prevents corrosion
- Easy installation
- Vertical or horizontal mounting (mounting brackets included)
- Available in black or white finish

### Specifications:

Power: 125W RMS  
 Woofer: 5.25"  
 Tweeter: 0.5"  
 Impedance: 8Ω  
 Frequency Response: 80Hz–  
 20kHz ±3dB  
 Sensitivity: 88dB ±3dB

### Dimensions (cm):

Frame: (H) 25.5 × (W) 17.9 × (D)  
 15.6  
 With Mounting Bracket: (H) 26.6 ×  
 (W) 17.9 × (D) 18.8

IP-55

DIAMOND  
GRILL

## 5" Outdoor wall mounted speaker (pair)

**BLYSS OD560**



- Built to last product design
- High-performance 5" driver woofer with bass reflex
- Premium UV-coated cabinet prevents discoloration over time
- Fast & Simple installation
- Impeccable Sound engineering

### Specifications:

Power: 80W  
 Impedance: 8Ω  
 Tweeter: 1" Titanium soft dome  
 Woofer: 5.25" Graphite Cone,  
 Rubber Surround  
 Frequency Resp.: 65Hz-20kHz  
 Housing Material: PP

### Dimensions (cm):

275 x 190 x 180 mm

## 4" Outdoor wall mounted speaker (pair)

**BLYSS OD450**



- Built to last product design
- High-performance 5" driver woofer with bass reflex
- Premium UV-coated cabinet prevents discoloration over time
- Fast & Simple installation
- Impeccable Sound engineering

### Specifications:

Power: 60W  
 Impedance: 8Ω  
 Tweeter: 1" Silk soft dome  
 Woofer: 4" Graphite Cone,  
 Rubber Surround  
 Frequency Resp.: 75Hz-20kHz  
 Housing Material: PP

### Dimensions (cm):

231 x 155 x 148 mm

## 6.5" Indoor/Outdoor Speakers (pair)

**BLYSS 65**



- High-quality speaker designed to deliver dynamic and open audio
- Rust-resistant aluminum mesh
- Stainless aluminum grill that meets the highest durability standards
- Speaker rated IP-66; specially designed to withstand all weather conditions including sprinkler systems, water jets, etc.
- Copper connectors protected with a waterproof cover to prevent corrosion
- Mounts for horizontal/vertical installation included
- Perfect for installation at home, in yards, gardens, studios, restaurants, event halls, cafes, educational institutions, PA systems, and parks
- Finish: White
- Available with transformer

### Specifications:

Power: 120W  
 Woofer: 6.5"  
 Titanium Tweeter: 1"  
 Impedance: 8Ω  
 Frequency response: 50Hz–20kHz ±3dB  
 Sensitivity: 91dB ±3dB

### Dimensions (cm):

(H) 41.5, (W) 27, (D) 2

**5.25" Indoor/Outdoor Speakers (pair)**



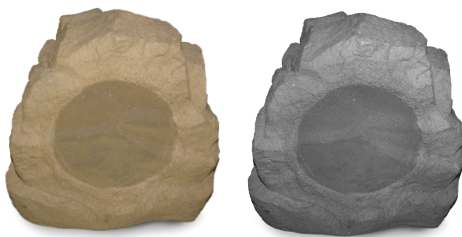
- All-weather
- High-performance 5.25" driver woofer with bass reflex
- Premium UV-coated cabinet prevents discoloration over time
- Supports 100V amplifier (for PA systems and fire alarms)
- Supports 8Ω amplifier (for home audio system)
- Aluminum dome tweeter delivers crystal clear highs
- Anti-rust aluminum grill with swivel logo
- 2-Way, full frequency range speaker configuration
- Unique 12dB crossover
- Simple DIY installation
- Multi-directional mounting brackets included
- Available with transformer

**Specifications:**

Power Tappings (100V): 3.75W/7.5W/15W/30W  
 Rated Power (8Ω): 60W  
 Frequency Response: 61Hz-20kHz  
 Sensitivity: 85dB±3dB  
 Woofer: 5.25"  
 Aluminum dome tweeter: 1"  
 Product Dimensions: L27xW19xH20 cm  
 Weight: 3.3Kg

**Rock-Style Garden Speakers**

**BLYSS R8**



- 2-Way speaker
- IP55 rated
- Designed for outdoor use
- Easy DIY installation
- 180 cm cable
- Finish: gray or brown

**Specifications:**

Power: 200W  
 Woofer: 8"  
 Tweeter: 0.5"  
 Impedance: 8Ω  
 Frequency Response: 35Hz–20kHz ±3dB  
 Sensitivity: 88dB ±3dB  
 Material: Polypropylene

**Dimensions (cm):** 32x28.5x32

**Rock-Style Garden Speakers**

**BLYSS R6**



- IP rating 56 resistant outdoor speaker
- 6.5" woofer designed for music playback in open spaces and large areas
- Shell's natural gray finish blends into garden landscapes seamlessly
- Easy DIY installation

**Specifications:**

Power: 150W RMS  
 Impedance: 8Ω  
 Frequency Response: 45Hz–20kHz ±3dB  
 Sensitivity: 88dB ±3dB

**Dimensions (cm):** 27x22x22.5

**200W Bluetooth Powered Speakers**

**BLYSS R8BT**



- Powerful 200W, 2-Way speakers
- TWS: Wirelessly connect 2 speakers to a single audio source for a surround-sound experience
- Pair of speakers (active + passive) combine to make a high-quality stereo system for outdoor music playback
- Bluetooth connectivity
- Woofer: 8", Tweeter: 1"
- Dynamic Hi-Fi sound
- Class-D digital amplifier with built-in SDP
- Rock shell design that blends seamlessly into any garden or park
- Water-resistant, IP56 certified
- Transformer: IP67 rated
- Easy DIY installation

**Specifications:**

Bluetooth: 4.2  
 Power: 200W  
 Woofer: 8"  
 Tweeter: 1" Soft Dome  
 Impedance: 8Ω  
 Frequency Response: 50Hz–20kHz ±3dB  
 Sensitivity: 91dB ±3dB

**Dimensions (cm):**

32 × 28.5 × 32

A dramatic photograph of a forest at night. The scene is dark, with the silhouettes of tall trees against a deep blue, stormy sky. A bright, jagged lightning bolt strikes the center of the frame, illuminating the surrounding trees and creating a stark contrast with the dark environment. The overall mood is mysterious and powerful.

Strike the  
Beat



## In-Ceiling Speakers

### In-Ceiling WiFi Speaker (1Master+1Slave)

**RIFT W260**



#### Features:

- Wi-Fi protocol: IEEE 802.11 a/b/g/n/ac 1x1 dual band WiFi 2.4 GHz and 5GHz
- Bluetooth 5.4 with EDR
- Supports WiFi/Bluetooth/U disk playback/AUX
- Supports APP interconnection control
- Supports 10/100Mbps Ethernet access/ HTTP/HTTPS protocol
- Supports Airplay/DLNA/Qplay streaming media protocol
- Supports AirPlay, Spotify, multi-room playback
- Supports Spotify, Tidal, Yandex Music, YouTube Music, Apple Music, Qobuz, Tunes, etc.
- Supports common lossless audio format decoding, up to 192kHz/24-bit format
- Supports MP3/AAC/MMA/FLAC/AIFF/ALAC/APE/WAV decoders
- Supports 433 MHz wireless RF remote control

#### Specifications:

Audio Input: WiFi 2.4 G&5 G / Bluetooth 5.4 / USB / AUX  
 Work Voltage: DC 24V-4A  
 Output Power: 60W 4Ω  
 Frequency Response: 60Hz-20kHz  
 Harmonic Distortion: 0.05%  
 SNR: 90 dB  
 Sensitivity: 88 ±3dB  
 Product Dimensions: 29\*29\*13CM  
 Weight: 2.2 kg

### 6.5" BT In-Ceiling Speaker Pair

**AIRSOUND-6**

Grill available in black or white



- In-ceiling speakers with ultra-low profile in-wall speakers that blend seamlessly with the wall
- High-performance Bluetooth 5.4 receiver for extended range and fast, stable data transfer (One active and one passive speaker)
- Magnetic steel grill in black or white finish
- Perfect solution for spaces without an amplifier/media cabinet

#### Specifications:

Bluetooth Version: 5.4  
 Power: 75W × 2  
 Woofer: 6.5" | Tweeter: 0.5" Mylar  
 Frequency Response: 70Hz-25kHz ±3dB  
 Sensitivity: 90dB ±3dB  
 Impedance: 8

#### Dimensions (cm):

Diameter: 21.5  
 Cutout Diameter: 19  
 Depth: 8

## 8" 3-Way Angled In-Ceiling LCR Speaker

RIFT 8ACF



### Features:

- 3-channel 8-inch speaker, mainly used as the main speaker in cinemas to achieve the best sound effect
- This product includes: one woofer, two midrange speakers, and one dome tweeter. There are switches on the panel for adjusting the low and high frequency sound pressure
- Angle design, precise sound direction and immersive listening experience
- 24dB cross-accurate frequency balance
- The ultra-thin magnetic grille with small holes and acoustic fabric features a clean and exquisite appearance as well as high-quality sound.

### Specifications:

Speaker power: 220W  
 Frequency response: 35Hz - 20KHz  
 Bass size: 8" carbon fiber cone  
 Midrange size: 2-2-inch carbon fiber cone  
 Tweeter size: 1" titanium diaphragm tweeter  
 Impedance (Ohms) : 8Ω  
 Sensitivity: 90dB±3dB  
 Cutout dimension: 280mm  
 Gross dimension: 311mm  
 Depth dimension: 175mm

## 8" In-Ceiling Angled Speaker

RIFT 8ACS



### Features:

- 2-way 8" woofer for optimal sound
- Dome tweeter
- Angle design for precise sound direction and immersive listening experience
- Excellent solution suitable for wall/ceiling and used as rear speakers
- 12dB crossover for accurate frequency balancing
- Ultra-thin magnetic grille with small holes and acoustic fabric, for a clean and delicate look and quality sound.

### Specifications:

Speaker power: 180W  
 Impedance (Ohms) : 8Ω  
 Bass size: 8"PPMICA  
 Tweeter size: 1" silk tweeter  
 Frequency response: 40Hz - 20KHz  
 Sensitivity: 89dB±3dB  
 Outout dimension: 255mm  
 Gross dimension: 280mm  
 Depth dimension: 170mm

## 6.5" In-Ceiling Speaker With Angled Driver

RIFT 65ACS

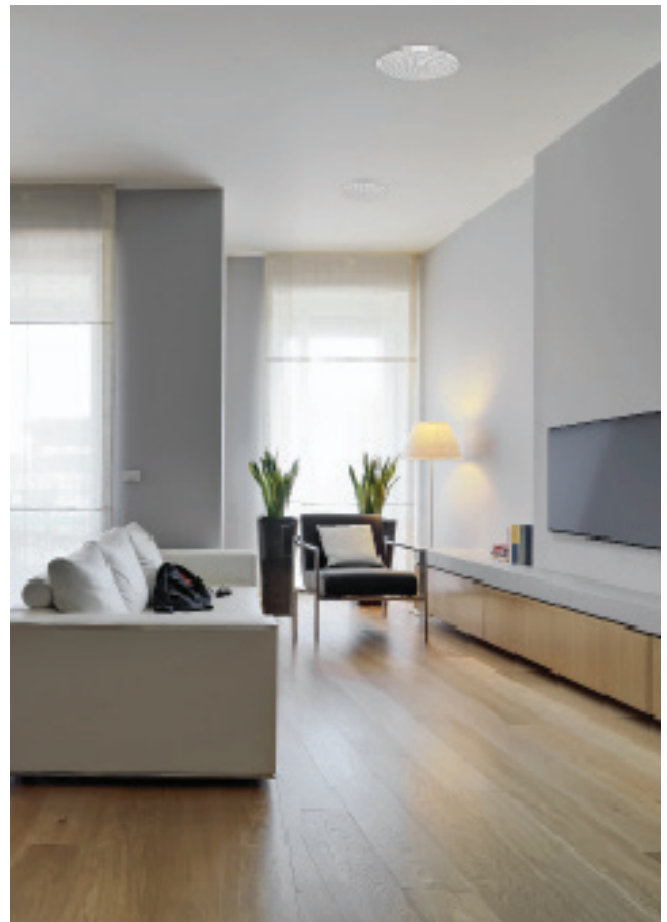


### Features:

- Power: 2-Way 80W RMS, 120W Max
- 6.5" Polypropylene woofer
- Silk dome, swivel Tweeter
- Ultra-thin magnetic grille
- Excellent solution suitable for wall/ceiling and used as rear speakers
- Grille with small holes and acoustic fabric, for a clean and delicate look
- Its angled design allows for precise sound direction, providing an immersivelistening experience that envelops you in rich, detailed soundscape.

### Specifications:

Power: 2-Way 80W RMS, 120W Max  
 Woofer: 6.5" Polypropylene  
 Tweeter: 0.75" Silk dome, swivel  
 Impedance: 8Ω  
 Frequency Response: 60Hz-20KHz  
 Cutout dimension: 8.18" (208mm)  
 Gross dimension: 9.13" (232mm)  
 Depth dimension: 5.75" (146mm)



Grill available in black or white



- In-ceiling speaker with ultra-thin magnetic grill
- 2-Way speaker with woofer and dome tweeter
- Excellent rear speaker solution
- 12dB crossover for precise frequency balance
- Perforated grill with acoustic fabric for a clean, discreet look and high-quality sound
- Available in two finishes: black or white

**Specifications:**

Power: 2-Way, 185W  
 Woofer: 8" | Tweeter: 1" Dome  
 Impedance: 8Ω  
 Frequency Response: 30Hz–20kHz ±3dB  
 Crossover: 12dB ±2dB  
 Sensitivity: 88dB ±3dB

**Dimensions (cm):**

External Diameter: 25.4  
 Cutout Diameter: 22.9  
 Depth: 8.7

PREMIUM LINE

RIFT MA8

8" In-Wall Speaker – 185W

- Elegant design provides a premium, luxurious look
- 2-Way speaker with an 8" woofer and 1" tweeter
- Durable metal frame ensures stability while preventing unwanted vibrations/resonances.
- Stainless aluminum grill resistant to varying environmental conditions suitable for use in bathrooms and kitchens
- Quick, easy, user-friendly installation
- 12dB crossover: precise sound balance.

**Specifications:**

Woofer: 8"  
 Tweeter: 1"  
 Power: 185W  
 Frequency Response: 40Hz–20kHz ±3dB  
 Impedance: 8Ω  
 Sensitivity: 89dB ±3dB  
 Crossover: 12dB ±2dB  
 Installation Depth: 10.5 cm  
 Cut-Out Diameter: 24.3 cm  
 Overall Grill Diameter: 28 cm  
 Grill Color: Black and White (included)



PREMIUM LINE

RIFT MA6

6.5" In-Wall Speaker – 150W

- Elegant design provides a premium, luxurious look
- 2-Way speaker with 6.5" woofer and 1" tweeter
- Durable metal frame ensures stability while preventing unwanted vibrations/resonances
- Stainless aluminum grill resistant to varying environmental conditions suitable for use in bathrooms and kitchens
- Quick, easy, user-friendly installation
- 12dB crossover: precise sound balance.

**Specifications:**

Woofer: 6.5"  
 Tweeter: 1"  
 Power: 150W  
 Frequency Response: 45Hz–20kHz ±3dB  
 Impedance: 8Ω  
 Sensitivity: 89dB ±3dB  
 Crossover: 12dB ±2dB  
 Mounting Depth: 10 cm  
 Cutout Diameter: 20 cm  
 Overall Diameter (with grill): 24.4 cm  
 Grill Color: Black or White (included)



PREMIUM LINE

RIFT MA5

5.25" In-Wall Speaker – 125W

- Elegant design provides a premium, luxurious look
- 2-Way speaker with 5.25" woofer and 0.75" tweeter
- Durable metal frame ensures stability while preventing unwanted vibrations/resonances
- Stainless steel aluminum grill resistant to varying environmental conditions suitable for use in bathrooms and kitchens
- Quick, easy, user-friendly installation
- 12dB crossover: precise sound balance.

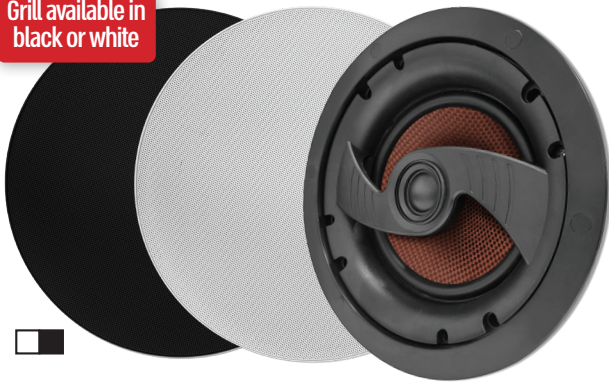
**Specifications:**

Woofer: 5.25"  
 Tweeter: 0.75"  
 Power: 125W  
 Frequency Response: 70Hz–20kHz ±3dB  
 Impedance: 8Ω  
 Sensitivity: 89dB  
 Crossover: 12dB  
 Mounting Depth: 8 cm  
 Cutout Diameter: 18 cm  
 Overall Diameter (with grill): 20 cm  
 Grill Color: Black or White (included)



8" 2-Way In-Ceiling Speaker

Grill available in black or white



- In-ceiling speaker with ultra-thin magnetic grill
- 2-Way speaker with woofer and dome tweeter
- Excellent rear speaker solution
- 12dB crossover for precise frequency balance
- Perforated grill with acoustic fabric for a clean, discreet look and high-quality sound
- Available in two finishes: black or white

**Specifications:**

Power: 2-Way, 200W  
 Woofer: 8" Kevlar | Tweeter: 1" Dome  
 Impedance: 8Ω  
 Frequency Response: 30Hz–20kHz ±3dB  
 Crossover: 12dB ±2dB  
 Sensitivity: 88dB ±3dB

**Dimensions (cm):**

External Diameter: 27.2  
 Cutout Diameter: 24.1  
 Depth: 11

6.5" 2-Way In-Ceiling Speaker

Grill available in black or white



- In-ceiling speaker with ultra-thin magnetic grill
- 2-Way speaker with woofer and dome tweeter
- Excellent rear speaker solution
- 12dB crossover for precise frequency balance
- Perforated grill with acoustic fabric for a clean, discreet look and high-quality sound
- Available in two finishes: black or white

**Specifications:**

Power: 2-Way, 150W  
 Woofer: 6.5" | Tweeter: 1" Dome  
 Impedance: 8Ω  
 Frequency Response: 48Hz–20kHz ±3dB  
 Crossover: 12dB ±2dB  
 Sensitivity: 88dB ±3dB

**Dimensions (cm):**

Diameter: 24.4  
 Cutout Diameter: 20  
 Depth: 9.8

6.5" 2-Way In-Ceiling Speakers

Grill available in black or white



- In-ceiling speakers with ultra-thin magnetic grill
- 2-Way speakers with Kevlar woofer and dome tweeter
- Excellent rear speaker solution
- 12dB crossover for precise frequency balance
- Perforated grill with acoustic fabric for a clean, discreet look and high-quality sound
- Available in two finishes: black or white

**Specifications:**

Power: 2-Way, 120W  
 Woofer: 6.5" | Tweeter: 1"  
 Impedance: 8Ω  
 Frequency Response: 30Hz–20kHz ±3dB  
 Sensitivity: 86dB ±3dB  
 Crossover: 12dB ±2dB | Magnet: 100z

**Dimensions (cm):**

External Diameter: 20  
 Cutout Diameter: 22.5  
 Depth: 9.5

5.25" 2-Way In-Ceiling Speakers

Grill available in black or white



- In-ceiling speakers with ultra-thin magnetic grill
- 2-Way speakers with Kevlar woofer and dome tweeter
- Excellent rear speaker solution
- 12dB crossover for precise frequency balance
- Perforated grill with acoustic fabric for a clean, discreet look and high-quality sound
- Available in two finishes: black or white

**Specifications:**

Power: 2-Way, 100W  
 Woofer: 5.25" | Tweeter: 1"  
 Impedance: 8Ω  
 Frequency Response: 35Hz–20kHz ±3dB  
 Sensitivity: 86dB ±3dB  
 Crossover: 12dB ±2dB | Magnet: 100z

**Dimensions (cm):**

External Diameter: 17.5  
 Cutout Diameter: 19.6  
 Depth: 7.7

## 6.5" 2-Way In-Ceiling Speakers

RIFT 06



- Ultra-thin grill with acoustic fabric that blends in seamlessly with walls or ceiling
- 2-Way speakers with PP cone woofer for deep bass
- Crossover control for precise frequency balance
- 1.5 cm aesthetic frame for a clean appearance
- Excellent rear speaker solution
- Rigid and durable plastic housing

### Specifications:

Power: 2-Way, 120W  
 Woofer: 6.5" | Tweeter: 1"  
 Impedance: 8Ω  
 Frequency Response: 60Hz–20kHz ±3dB  
 Sensitivity: 90dB ±3dB  
 Crossover: 12dB ±2dB

### Dimensions (cm):

External Diameter: 23.8  
 Cutout Diameter: 20.2  
 Depth: 8.6

## 5.25" 2-Way In-Ceiling Speakers

RIFT 05



- Ultra-thin grill with acoustic fabric that blends in seamlessly with walls or ceiling
- 2-Way speakers with PP cone woofer for deep bass
- Crossover control for precise frequency balance
- 1.5 cm aesthetic frame for a clean appearance
- Excellent rear speaker solution
- Rigid and durable plastic housing

### Specifications:

Power: 2-Way, 100W  
 Woofer: 5.25" | Tweeter: "1  
 Impedance: 8Ω  
 Frequency Response: 75Hz–20kHz ±3dB  
 Sensitivity: 88dB ±3dB  
 Crossover: 12dB ±2dB

### Dimensions (cm):

External Diameter: 20.2  
 Cutout Diameter: 16.6  
 Depth: 7.8

## 4" 2-Way round In-Ceiling Speakers

RIFT 04



- Ultra-thin grill with acoustic fabric that blends in seamlessly with walls or ceiling
- 2-Way speakers with PP cone woofer for deep bass
- Crossover control for precise frequency balance
- 1.5 cm aesthetic frame for a clean appearance
- Excellent rear speaker solution
- 1.5 cm aesthetic frame

### Specifications:

Power: 2-Way, 100W  
 Woofer: 4" | Tweeter: 1"  
 Impedance: 8Ω  
 Frequency Response: 80Hz–20kHz ±3dB  
 Sensitivity: 88dB ±3dB  
 Crossover: 12dB ±2dB

### Dimensions (cm):

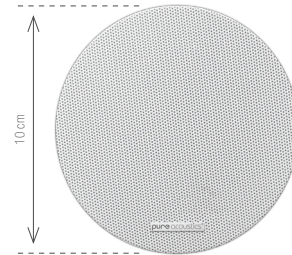
External Diameter: 17  
 Cutout Diameter: 13.5  
 Depth: 6

## 3" In-ceiling speaker

RIFT 013



For a clean look, the logo can be removed



- Ultra-thin grill with 2.5 mm frame
- Ideal solution for bathrooms or small spaces/stereo effect
- ~50W power with balanced sound across a wide frequency range
- Slim magnetic grill for a clean and discreet appearance
- Gold-plated Quick Connect terminals and easy DIY installation

### Specifications:

Woofer: 3"  
 Power: 50W  
 Impedance: 8Ω  
 Frequency Response: 120Hz–20kHz ±3dB  
 Sensitivity: 83dB ±3dB

### Dimensions (cm):

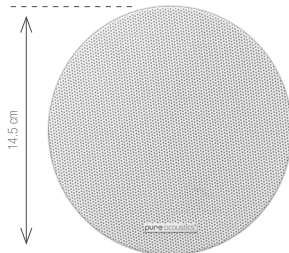
External Diameter: 10  
 Cutout Diameter: 8.6  
 Depth: 5.25

## 4" In-ceiling speaker

RIFT 014



For a clean look, the logo can be removed



### Specifications:

Woofer: 4"  
 Power: 80W  
 Impedance: 8Ω  
 Frequency Response: 80Hz–20kHz ±3dB  
 Sensitivity: 83dB ±3dB

### Dimensions (cm):

External Diameter: 14.5  
 Cutout Diameter: 12.5  
 Depth: 6.7

- Ultra-thin grill
- Ideal solution for bathrooms or small spaces/stereo effect
- Slim magnetic grill for a clean and discreet appearance
- Gold-plated Quick Connect terminals
- Quick and easy DIY installation

## 6.5" 2-Way In-Ceiling Speaker

**SLIM-630**

Grill available in black or white

ULTRA SLIM  
Depth: 5.4 cm



- High-quality, balanced audio that delivers a clear and rich listening experience without distortion.
- Ultra-thin magnetic grill
- Available in two finishes: black or white
- Quick installation with Quick-Fit clips
- Versatile installation options to suit different needs, including ceilings, walls, and non-standard locations.

### Specifications:

Power: 120W  
Frequency Response: 118Hz–20kHz  
±3dB  
Sensitivity: 91dB ±2dB  
Impedance: 8Ω  
Woofer: 6.5"

### Dimensions (cm):

External Diameter: 24.8  
Cutout Diameter: 21.3  
Depth: 5.4

## 6.5" Ultra-Slim In-Ceiling Speaker

**LUFT**



Quick-Click  
Installation  
Patent

Ultra-Slim!  
Only 5.8 cm  
Depth

- 2-Way speaker
- Dome tweeter
- Precise frequency separation for crisp highs and rich bass ideal for home theater and professional stereo systems
- Quick installation with Quick-Fit clips
- Magnetic grill available in black and white
- Slim and elegant design: Ultra-Thin modern design that fits perfectly in any space.
- High-quality & durable: Long-lasting reinforced structure reduces vibrations and ensures clear sound.

### Specifications:

Power: 2-Way 150W  
Frequency Response: 68Hz–20kHz  
Sensitivity: 89dB ±2dB  
Impedance: 8Ω  
Woofer: 6.5"  
Tweeter: 0.5" PEI Dome  
Grill Material: Coated steel

### Dimensions (cm):

Cut-Out Diameter: 21.3 cm  
Outer Frame Diameter: 24.8 cm  
Installation Depth: 5.8 cm

## 4" Square In-Ceiling Speaker **RIFT MASQR**

- 2-Way speaker
- Dome tweeter Precise frequency separation for crisp highs and rich bass. Ideal for home theater and professional stereo systems
- Magnetic available in black and white
- Practical design: fits perfectly in any space without crowding the room
- Crossover for perfect balance between high and low frequencies offers a rich and natural sound experience.
- High-quality & durable: Long-lasting reinforced structure reduces vibrations, ensures clear sound.

### Specifications:

Power: 2-Way 100W  
Frequency Response: 80Hz–20kHz  
Sensitivity: 88dB ±3dB  
Impedance: 8Ω  
Woofer: 4"  
Tweeter: 0.5" PEI Dome

### Dimensions (cm):

Cut-Out Dimensions: 108 × 108 mm  
Outer Frame Dimensions:  
127 × 127 mm  
Installation Depth: 85 mm



## 4" In-Ceiling Speaker **RIFT MA4CRL**

- 2-Way speaker
- Dome tweeter: Precise frequency separation for crisp highs and rich bass. Ideal for home theater and professional stereo systems
- Magnetic grill available in black and white.
- Practical design: Modern and elegant, fits perfectly in any space without crowding the room.
- Crossover control offers perfect balance between high and low frequencies for a rich and natural sound experience.
- High-quality & durable: Long-lasting reinforced structure reduces vibrations, ensures clear sound.

### Specifications:

Power: 2-Way 100W  
Frequency Response: 80Hz–20kHz  
Sensitivity: 88dB ±3dB  
Impedance: 8Ω  
Woofer: 4"  
Tweeter: 0.5" PEI Dome

### Dimensions (cm):

Cut-Out Diameter: 141 mm  
Outer Frame Diameter: 160 mm  
Installation Depth: 84 mm



# In-Wall Speakers

## 10 " In-Wall Speaker

RIFT OWSW10

- Adjustable crossover frequency: Supports custom low-frequency response, with a frequency adjustment range of 30-200Hz.
- Phase control: Provides 0-180 degrees phase adjustment function, allowing the sound of the subwoofer to align with other audio devices, achieving seamless integration.
- Flexible connectivity: Supports RCA input interface, enabling flexible connection with various audio sources.
- Automatic standby mode: Built-in automatic power-on/off function, saving energy when the subwoofer is idle.
- User-friendly adjustment: Offers options for volume, gain, frequency, and phase control, allowing precise adjustment of sound output..

### Specifications:

Power Output: 1 -Way 200W  
 Frequency: 30Hz-200 Hz  
 Sensitivity: 90dB±3dB  
 Impedance: 4Ω  
 Woofer: 10"  
 Dimension: 475x305x180mm  
 Weight: 9.8kg Installation Depth: 5.8 cm



## 4x 6.5-Inch Embedded Line Array Audio System

RIFT F65C

- Purpose-built for home theater front channels, delivering a powerful and immersive cinematic soundstage
- High-output 300W design with 4Ω impedance for dynamic, room-filling performance
- Precision 3-way driver system with multiple 6.5" woofers and a titanium tweeter for deep bass and crystal-clear highs
- High sensitivity (92dB) and wide frequency range (65Hz–20kHz) for impactful, detailed sound at any volume
- Premium MDF construction with aluminum panel edges, combining reduced resonance with a sleek, modern finish

### Specifications:

Speaker power: 300W  
 Impedance (Ohms) : 4Ω  
 Bass size: 3x6.5"  
 Mid-range speaker size: 1x6.5"  
 Tweeter size: 1" titanium tweeter  
 Frequency response: 65Hz - 20KHz  
 Sensitivity: 92dB±3dB  
 Gross dimension: L1024mm x W334mm x H103mm  
 Cutout dimension: L1000mm x W310mm x H100mm



## 2x12" Full-Range Home Theater Audio System

RIFT F12C

- Dual 12" woofers deliver deep 40 Hz extension for powerful LFE impact and room-filling bass.
- True 3-way coverage: 2x12" woofers + 8" mid + 1.8" tweeter span 40 Hz–20 kHz for clear dialogue, crisp detail, and seamless imaging.
- 600 W headroom: handles cinematic peaks and fast transients cleanly, without audible distortion.
- Easy to drive: 4 Ω and 92 dB ±3 dB sensitivity deliver high SPL with modest power; compatible with a wide range of home amps/AVRs.
- Solid, durable build: MDF baffle controls resonance; aluminum panel edging adds rigidity and longevity, ideal for long-term home theater use.

### Specifications:

Speaker power: 600W  
 Impedance (Ohms) : 4Ω  
 Bass size: 2x12"  
 Midrange speaker size: 8"  
 Tweeter size: 1.8"  
 Frequency response: 40Hz - 20KHz  
 Sensitivity: 92dB ±3dB  
 Gross dimension: L925 xW415 xH170 mm  
 Cutout dimension: L892 xW391 xH167mm



## 12-Inch Full-Range Home Theater Audio System

RIFT F12

- Cinema-grade immersion: 12" woofer + 8" mid + 1.8" tweeter tri-way covers 45Hz–20kHz for deep bass, clear dialogue, and crisp detail.
- Powerful headroom: 400W output handles action movies and high-dynamic music effortlessly.
- Easy to drive: 4Ω impedance works with a wide range of home amplifiers/AVRs for flexible integration.
- High efficiency: 92dB ±3dB sensitivity delivers strong SPL with less power for better efficiency.
- Solid build: MDF baffle controls resonance; aluminum panel edging adds rigidity and durability for long-term home use.

### Specifications:

Speaker power: 400W  
 Impedance (Ohms) : 4Ω  
 Bass size: 12"  
 Midrange speaker size: 8"  
 Tweeter size: 1.8"  
 Frequency response: 45Hz - 20KHz  
 Sensitivity: 92dB ±3dB  
 Gross dimension: L600 xW415 xH170 mm  
 Cutout dimension: L576 xW391 xH167mm



8" In-Wall Dual Woofer Speaker (pair)



- Ultra-thin magnetic grills
- 2-Way Fiberglass woofer
- Dome tweeter
- High-quality + balanced sound solution
- 12dB crossover offers accurate frequency balancing
- Fiberglass cone for clean, aesthetic appearance
- Black panel
- White magnetic mesh cover

**Specifications:**

Power Output: 3 -Way 150W  
 Frequency: 65Hz-20KHz  
 Sensitivity: 90dB±3dB  
 Impedance: 8Ω  
 Woofer: 8 " x2  
 Tweeter: 1" Dome  
 Crossover network: 12dB ±2dB  
 Cutout dimension: 535x232mm (21"x9.13")  
 Gross dimension: 566x264mm (22.3"x10.4")  
 Depth dimension: 110mm (4.33")

RIFT F8

8" In-Wall Speaker (pair)



- Ultra-thin magnetic grills
- 2-Way Fiberglass woofer
- Dome tweeter
- High-quality + balanced sound solution
- 12dB crossover offers accurate frequency balancing
- Fiberglass cone for a clean, aesthetic appearance
- Black panel
- White magnetic mesh cover

**Specifications:**

Power Output: 2 -Way 135W  
 Frequency: 60Hz-20 KHz  
 Sensitivity: 90dB±3dB  
 Impedance: 8Ω  
 Woofer: 8 "  
 Tweeter: 1" Dome  
 Crossover network: 12dB ±2dB  
 Cutout dimension: 327x232mm (12.9"x9.13")  
 Gross dimension: 360x265mm (14.17"x10.43")  
 Depth dimension: 110mm (4.33")

In-Wall LCR Center Speaker with Flat Magnetic Grill

RIFT 52



- 2-Way speaker
- Slim grill
- Rich sound
- 12dB crossover
- Directional adjustment of high frequencies
- Vibration and noise damping system
- Easy and convenient installation

**Specifications:**

Power: 165W  
 Woofer: 2x5.25"  
 Titanium Dome Tweeter: 0.75"  
 Impedance: 8Ω  
 Frequency Response: 49Hz-20kHz  
 Sensitivity: 88dB ±3dB  
 Crossover: 12dB ±2dB

**Dimensions (cm):**

External: H 18.7 × D 7.7 × W 37.3  
 Cutout: H 15.2 × D 7.3 × W 35.7

Pair of 6.5" In-Wall Speakers with Flat Magnetic Grill

RIFT 89



**Features:**

- Rectangular in-wall speakers
- Slim magnetic grill that blends in seamlessly with the wall and ceiling
- Paintable/customizable grill
  - 12dB crossover for more accurate frequency balance
- Easy and convenient installation

**Specifications:**

Power: 2-Way 150W  
 Woofer: 6.5" polypropylene  
 Titanium Tweeter: 0.75"  
 Impedance: 8Ω  
 Frequency Response: 48Hz-20kHz  
 Sensitivity: 91dB ±3dB  
 Crossover: 12dB ±2dB

**Dimensions (cm):**

External: H 30.7 × D 8.2 × W 20.7  
 Cutout: H 27 × D 7.8 × W 17

# In-Ceiling Speakers 100V Line

## 8" In-Wall Line Transformer Speaker – with Triple Terminal

**VX-818**



**2-Way Musical**

**Specifications:**

Power Handling: 7.5W / 15W – 100V  
 Power Output: 40W, 8Ω  
 Woofer: 8"  
 Frequency Response: 100Hz – 15kHz ±1dB  
 Sensitivity: 93dB ±1dB

**Dimensions (Diameter):**

Overall: 22.4 cm  
 Cutout Size: 20 cm  
 Depth: 7.2 cm

## 6.5" In-Wall Line Transformer Speaker – with Triple Terminal

**RIFT 614**



**2-Way Musical**

**Specifications:**

Power Handling: 2.5W / 5W / 10W – 100V  
 Power Output: 24W, 8Ω  
 Woofer: 6.5"  
 Frequency Response: 100Hz – 16kHz ±1dB  
 Sensitivity: 92dB ±1dB

**Dimensions (Diameter):**

Overall: 19 cm  
 Cutout Size: 18.5 cm  
 Depth: 6.6 cm

## 8" Hybrid Ceiling Speaker

**RIFT 8LV8**

- 4-wire transformer with adjustable power for 70V/100V systems
- Wide coverage. Designed to deliver uniform sound across large spaces
- Elegant design with flush-mount installation, magnetic grill, and slim frame
- Clear audio quality suitable for both music and speech
- Lightweight construction, easy installation with mounting clips
- Compatible with commercial audio and public address systems

**Specifications:**

Power Taps (100V): 40W / 20W / 10W  
 Power Output: 150W, 8Ω  
 Frequency Response: 70Hz–20kHz (±1dB)  
 Sensitivity: 92dB (±1dB)  
 Woofer: 8"

**Dimensions (cm):**

Diameter: 245 mm  
 Depth: 84 mm  
 Cutout Diameter: 218 mm



## 6.5" Hybrid Ceiling Speaker

**RIFT 7LV8**



- 4-wire transformer with adjustable power for 70V/100V systems
- Wide coverage. Designed to deliver uniform sound across large spaces
- Elegant design with flush-mount installation, magnetic grill, and slim frame
- Clear audio suitable for both music and speech
- Lightweight construction, easy installation with mounting clips
- Compatible with commercial audio and public address systems

**Specifications:**

Power Taps (100V): 30W / 15W / 7.5W  
 Power Output: 120W, 8Ω  
 Frequency Response: 70Hz–20kHz (±1dB)  
 Sensitivity: 92dB (±1dB)  
 Woofer: 6.5"

**Dimensions (cm):**

Diameter: 210 mm  
 Depth: 148 mm  
 Cutout Diameter: 186 mm

## 6.5" Hybrid Ceiling Speaker

**RIFT 6LV8**



- 4-wire transformer with adjustable power for 70V/100V systems
- Wide coverage. Designed to deliver uniform sound across large spaces
- Elegant design with flush-mount installation, magnetic grill, and slim frame
- Clear audio suitable for both music and speech
- Lightweight construction, easy installation with mounting clips
- Compatible with commercial audio and public address systems

**Specifications:**

Power Taps (100V): 30W / 15W / 7.5W  
 Power Output: 120W, 8Ω  
 Frequency Response: 70Hz–20kHz (±1dB)  
 Sensitivity: 92dB (±1dB)  
 Woofer: 6.5"

**Dimensions (cm):**

Diameter: 210 mm  
 Depth: 78 mm  
 Cutout Diameter: 186 mm

## 5.25" Hybrid Ceiling Speaker

RIFT 5LV8



- 4-wire transformer with adjustable power for 70V/100V systems
- Wide coverage. Designed to deliver uniform sound across large spaces
- Elegant design with flush-mount installation, magnetic grill, and slim frame
- Clear audio suitable for both music and speech
- Lightweight construction, easy installation with mounting clips
- Compatible with commercial audio and public address systems

### Specifications:

Power: 20W / 10W / 5W – 100V

Output Power: 100W, 8Ω

Frequency Response: 80Hz–20kHz ±1dB

Sensitivity: 90 ±1dB

Woofer: 5.25"

### Dimensions (cm):

Diameter: 18.1 cm

Depth: 7.25 cm

Cutout Diameter: 16.1 cm

## 4" Hybrid Ceiling Speaker

RIFT 4LV8



- 4-wire transformer with adjustable power for 70V/100V systems
- Wide coverage. Designed to deliver uniform sound across large spaces
- Elegant design with flush-mount installation, magnetic grill, and slim frame
- Clear audio suitable for both music and speech
- Lightweight construction, easy installation with mounting clips
- Compatible with commercial audio and public address systems

### Specifications:

Power: 10W / 5W / 2.5W – 100V

Output Power: 80W, 8Ω

Frequency Response: 80Hz–20kHz ±1dB

Sensitivity: 91 ±1dB

Woofer: 4"

### Dimensions (cm):

Diameter: 15.0 cm

Depth: 6.2 cm

Cutout Diameter: 12.6 cm

# On-Wall Speakers

## 15" Professional 2-Way 500W PA Speaker

## ATLAS PRO 15



- Powerful 15" PA wall-mount speaker, ideal for indoor installations
- Rigid, high-grade enclosure ensures durability and long lasting premium audio performance
- 2-Way system with Neodymium tweeter for rich and detailed sound
- Maximum power of 500W RMS delivers an impressive presence in any space
- 15" woofer provides a deep, warm, and powerful bass; perfect for live music, speech, and dynamic sound reinforcement
- 8Ω impedance, compatible with standard amplifiers
- Allows daisy-chaining of speakers
- High sensitivity of 101dB SPL for optimal efficiency and easy drive capability
- 50Hz–18kHz frequency response, suitable for both speech and music

### Specifications:

Woofer: 15"  
 Tweeter: Neodymium  
 Impedance: 8Ω  
 Maximum Power: 500W RMS  
 Frequency Response: 50Hz–18kHz (±3dB)  
 Sensitivity: 101dB SPL (1W/1m)

## 12" Professional 2-Way 400W PA Speaker

## ATLAS PRO 12



- Powerful 12" PA wall-mount speaker, ideal for indoor installations
- Rigid, high-grade enclosure ensures durability and long lasting premium audio performance
- 2-Way system with Neodymium tweeter for rich and detailed sound
- Maximum power of 400W RMS delivers an impressive presence in any space
- 12" woofer provides a deep, warm, and powerful bass; perfect for live music, speech, and dynamic sound reinforcement
- 8Ω impedance, compatible with standard amplifiers
- Allows daisy-chaining of speakers
- High sensitivity of 97dB SPL for optimal efficiency and easy drive capability
- 50Hz–18kHz frequency response, suitable for both speech and music

### Specifications:

Woofer: 12"  
 Tweeter: Neodymium  
 Impedance: 8Ω  
 Maximum Power: 400W RMS  
 Frequency Response: 50Hz–18kHz (±3dB)  
 Sensitivity: 97dB SPL (1W/1m)

## 10" Professional 2-Way 300W PA Speaker

## ATLAS PRO 10



- Powerful 10" PA wall-mount speaker, ideal for indoor installations
- Rigid, high-grade enclosure ensures durability and long-lasting premium audio performance
- 2-Way system with Neodymium tweeter for rich and detailed sound
- Maximum power of 300W RMS delivers an impressive presence in any space
- 10" woofer provides a deep, warm, and powerful bass; perfect for live music, speech, and dynamic sound reinforcement
- 8Ω impedance, compatible with standard amplifiers
- Allows daisy-chaining of speakers
- High sensitivity of 95dB SPL for optimal efficiency and easy drive capability
- 60Hz–18kHz frequency response, suitable for both speech and music

### Specifications:

Woofer: 10"  
 Tweeter: Neodymium  
 Impedance: 8Ω  
 Maximum Power: 300W RMS  
 Frequency Response: 60Hz–18kHz (±3dB)  
 Sensitivity: 95dB SPL (1W/1m)

## 10" 2-Way Passive Speaker

## PREMIUM LINE C-110



- Pair of powerful 2-Way speakers
- Closed wooden cabinet with acoustic fabric for deep, high-quality, and immersive sound in large spaces
- Built-in crossover for accurate sound and precise frequency distribution between lows and highs
- SPEAKON connectors for quick and easy installation
- Neodymium tweeter for rich and detailed sound
- Pair of multi-angle brackets included; allow mounting in various positions: ceiling, wall, vertical, horizontal, tilted 0–30°, attachable on back, sides, top, or bottom of the speaker
- Easy installation with SPEAKON connector and mounting bracket
- Available in black or white

### Specifications:

Power: 250W  
 Woofer: 10" Magnetic 2-Way  
 Tweeter: 1" Voice Coil + Horn  
 Impedance: 8Ω  
 Frequency Response: 40Hz–20kHz (±3dB)  
**Dimensions (cm):**  
 (H) 49, (W) 30, (D) 27.8

### 8" 2-Way Passive Speaker



- Pair of powerful 2-Way speakers
- Closed wooden cabinet with acoustic fabric for deep, high-quality, and immersive sound in large spaces
- Built-in crossover for accurate sound and precise frequency distribution between lows and highs
- SPEAKON connectors for quick and easy installation
- Neodymium tweeter for rich and detailed sound
- Pair of multi-angle brackets included; allow mounting in various positions: ceiling, wall, vertical, horizontal, tilted 0–30°, attachable on back, sides, top, or bottom of the speaker
- Easy installation with SPEAKON connector and mounting bracket
- Available in black or white

**Specifications:**

Power: 220W,  
 Woofer: 8" Magnetic  
 2-Way,  
 Tweeter: 1" Voice Coil +  
 Horn,  
 Impedance: 8Ω,  
 Frequency Response:  
 50Hz–20kHz (±3dB)

**Dimensions (cm):**

(H) 44.4, (W) 24.5, (D) 23.5

### Pair of Indoor 2-Way Hanging/Shelf Speakers



- Pair of powerful 2-Way speakers
- Closed wooden cabinet with acoustic fabric for deep, high-quality, and immersive sound in large spaces
- Built-in crossover for accurate sound and precise frequency distribution between lows and highs
- SPEAKON connectors for quick and easy installation
- Neodymium tweeter for rich and detailed sound
- Pair of multi-angle brackets included; allow mounting in various positions: ceiling, wall, vertical, horizontal, tilted 0–30°, attachable on back, sides, top, or bottom of the speaker
- Easy installation with SPEAKON connector and mounting bracket
- Available in black or white

**Specifications:**

Power: 170W  
 Woofer: 6" Magnetic  
 2-Way  
 Tweeter: 3" Voice Coil  
 Impedance: 8Ω  
 Frequency Response:  
 60Hz–20kHz ±3dB

**Dimensions (cm):**

(H) 34.5, (W) 21.5, (D) 19.5

### 3" Mountable Outdoor Satellite Speaker



- Wall mount speakers
- With very elegant and sleek housing design.
- With one low frequency driver, 3" respectively
- Made from carefully selected premium grade material for durability

**Specifications:**

Power: 170W  
 Woofer: 6" Magnetic  
 2-Way  
 Tweeter: 3" Voice Coil  
 Impedance: 8Ω  
 Frequency Response:  
 60Hz–20kHz ±3dB

**Dimensions (cm):**

(H) 34.5, (W) 21.5, (D) 19.5

### Ultra-Compact Satellite Speakers



- Amazing sound: 120W power and 8Ω per speaker
- Mounting brackets that allow for full movement and optimal positioning included
- Cloth-covered grill smooth, warm look
- Available in black or white finish

**Specifications**

Power: 150W  
 Woofer: 2.5"  
 Impedance: 8Ω  
 Frequency Response: 150Hz–  
 22kHz ±3dB

**Dimensions (cm):**

(W) 9 × (H) 9 × (D) 10



Wild  
Unmuted

# Pendant Speakers

## 8" Ceiling Hanging Speaker with Line Transformer and Water-Resistant Design

**BLYSS G483**

IP-66  
WATERPOOF



- Acoustic resonance enclosure ensures even sound dispersion throughout the listening area with 120° of coverage.
- Passive bass radiator OBE technology complements the main driver and enhances low frequencies for a deep, resonant bass.
- Stainless aluminum grill that meets the highest durability standards.
- IP-66 rated; designed to withstand all weather conditions including rain systems, water jets, etc.
- Perfect for high-ceilinged spaces and projects requiring premium aesthetics.
- "Low-ceiling effect" compensates for sound lost in high ceilings, producing natural and accurate audio.
- Perfect for installation in restaurants, bars, shops, meeting rooms, hospitality spaces, and halls.
- For optimal sound and full frequency range, it is recommended to pair G-483 with a subwoofer.

### Specifications:

Tweeter: 1.1"

Woofer: 8"

Frequency Response: 37Hz–20kHz ±3dB

Power: 150W @ 8Ω

Power (100V): up to 50W

Sensitivity: 86dB

Ingress Protection: IP66, with stainless aluminum grill

Dimensions (H x W x D): 37 x 25 x 25 cm

Finish: Brown

## 8" Ceiling Hanging Speaker with Line Transformer and Water-Resistant Design

**BLYSS G482**

IP-66  
WATERPOOF



- Multi-purpose speaker with full mounting kit: ceiling, wall, floor, and ground-spike installation compatible.
- Acoustic resonance enclosure for uniform sound dispersion and 120° coverage.
- Stainless aluminum grill designed to meet the highest durability standards.
- IP66-rated, designed to withstand all weather conditions (spray systems, water jets, etc.)
- Perfect for high-ceilinged spaces and projects requiring premium aesthetics.
- "Low-ceiling effect" compensates for sound lost in high ceilings, producing natural and accurate audio.
- Perfect for installation in restaurants, bars, shops, meeting rooms, hospitality spaces, and halls.
- For optimal sound and full frequency range, it is recommended to pair MARS-85 with a subwoofer.

### Specifications:

Tweeter: 1"

Woofer: 8"

Frequency Response: 25Hz–20kHz ±3dB

Power: 150W RMS @ 8Ω

Power at 100V: up to 50W

Sensitivity: 91dB

Water and dust resistant (IP66) with stainless aluminum grill

Dimensions (H x W x D): 34 x 27 x 27 cm

Finish: Black

## 6.5" Ceiling Hanging Speaker with Line Transformer and Water-Resistant Design

# BLYSS G462



- Multi-purpose speaker with full mounting kit: ceiling, wall, floor, and ground-spike installation compatible
- Acoustic resonance enclosure for uniform sound dispersion and 120° coverage
- Stainless aluminum grill designed to meet the highest durability standards
- IP66-rated, designed to withstand all weather conditions (spray systems, water jets, etc.)
- Perfect for high-ceilinged spaces and projects requiring premium aesthetics
- "Low-ceiling effect" compensates for sound lost in high ceilings, producing natural and accurate audio
- Perfect for installation in restaurants, bars, shops, meeting rooms, hospitality spaces, and halls
- For optimal sound and full frequency range, it is recommended to pair MARS-65 with a subwoofer

### Specifications:

Tweeter: 1"

Woofer: 6.5"

Frequency Response: 35Hz–20kHz ±3dB

Power: 120W RMS @ 8Ω

Power @ 100V: up to 40W

Sensitivity: 90dB

Water and dust resistant: IP66, with stainless aluminum grill

Dimensions (HxWxD): 30x23x23 cm

Finish: White / Black

## 6.5" Ceiling-Mount Speaker – Includes Line Transformer

# GARDEN 60



- Acoustic resonance enclosure ensures uniform sound distribution with in 120° coverage
- Rust-proof aluminum grill
- IP-66 rating
- Specifically designed to withstand wet conditions (sprinklers, water jets, etc.)
- Ideal for installation in high-ceilinged spaces; for projects with high aesthetic requirements
- "Low ceiling" effect compensates for potential frequency loss due to high ceilings; capable of producing natural and accurate sound anywhere
- Perfect for installation in restaurants, bars, shops, meeting rooms, hospitality areas, halls, and more
- Versatile installation options: comes with a set of brackets for hanging, wall mounting, floor mounting, and ground spike installation

### Specifications

Power: 120W

Woofer: 6.5"

Frequency Response: 100Hz–20kHz ±3dB

Impedance: 8Ω

Sensitivity: 85dB

Finish: Brown

### Dimensions (cm):

20.8X20.8X28

## 8" Hybrid Hanging Ceiling Subwoofer: Indoor/Outdoor

# MARS-SUB-8



- 360° Omnidirectional sound with uniform dispersion and acoustic resonance enclosure
- IP66-rated, designed to withstand all weather conditions (spray systems, water jets, etc.)
- Perfect for high-ceilinged spaces and projects requiring premium aesthetics.
- Multi-purpose speaker with full mounting kit: ceiling, wall, floor, and ground-spike installation compatible.
- Stainless aluminum grill designed to meet the highest durability standards.
- "Low-ceiling effect" compensates for sound lost in high ceilings, producing natural and accurate audio.
- Built-in line transformer allows daisy-chaining of multiple units

### Specifications:

Power: 150W

Impedance: 4Ω

100V Power Taps: 50W, 25W, 12.5W, 6.25W

Frequency Response: 75Hz–700Hz ±3dB

Sensitivity: 86dB ±3dB

Woofer: 8" graphite cone with rubber surround

Connections: Spring-loaded terminals

Enclosure Material: Polypropylene

Grill Material: Aluminum

Includes: 3-meter adjustable steel cable and safety rope

Dimensions: 37.3 × 25.3 cm



## Speakers 100V Line

### 8" Premium Weatherized Outdoor Speaker 100V/8Ω

**BLYSS OT528**

- The speaker is compatible with amplification systems with a voltage of 100V or 8Ω, with strict specifications that allow installation outside the house within exposure to particularly extreme weather conditions and adapted to the sun.
- A speaker of extremely high sound quality, designed to give a dynamic and opensound.
- Stainless aluminum grill meets the highest standards
- A speaker with IP-66 standard was specially designed to meet all conditions atmospheric (sprinkler systems, water jets, etc.)
- Copper connectors to prevent corrosion protected by a waterproof cover
- Flexible installation: the speaker comes with a rack for horizontal/vertical hanging
- Suitable for installation: houses, yards, gardens, listening corners, restaurants, Event halls, cafes, educational institutions, systems Announcement, and parks
- Finish: white/black

#### Specifications:

Tweeter: 1" Silk soft dome  
 Woofer: 8" graphite cone, Rubber surround  
 Frequency Response: 56Hz-20kHz  
 Rated Power (8Ω): 150W  
 Power Tappings (100V): 50W, 25W, 12.5W, 6.25W  
 Termination: Standard rotary connector

Attachment: Brackets, Grille, Waterproof cover  
 Dimensions: H360xW245xD235mm  
 Impedance: 8Ω  
 Sensitivity: 86dB  
 Grille: Aluminium  
 Certifications: IP66  
 Material: PP



### 6.5" Premium Weatherized Outdoor Speaker 100V/8Ω

**BLYSS OT526**

- The speaker is compatible with amplification systems with a voltage of 100V or 8Ω, with strict specifications that allow installation outside the house within exposure to particularly extreme weather conditions and adapted to the sun.
- A speaker of extremely high sound quality, designed to give a dynamic and open sound.
- Stainless aluminum grill meets the highest standards
- A speaker with IP-66 standard was specially designed to meet all conditions atmospheric (sprinkler systems, water jets, etc.)
- Copper connectors to prevent corrosion protected by a waterproof cover
- Flexible installation: the speaker comes with a rack for horizontal/vertical hanging
- Suitable for installation: houses, yards, gardens, listening corners, restaurants, Event halls, cafes, educational institutions, systems Announcement, and parks
- Finish: white/black

#### Specifications:

Tweeter: 1" Silk soft dome  
 Woofer: 6.5" graphite cone, Rubber surround  
 Frequency Response: 57Hz-20kHz  
 Rated Power (8Ω): 120W  
 Power Tappings (100V): 40W, 20W, 10W, 5W  
 Termination: Standard rotary connector  
 Attachment: Brackets, Grille, Waterproof cover

Dimensions: H288xW195xD185mm  
 Impedance: 8Ω  
 Sensitivity: 86dB  
 Grille: Aluminium  
 Certifications: IP66  
 Material: PP



## 4.5" Premium Weatherized Outdoor Speaker 100V/8Ω

**BLYSS** OT524

- The speaker is compatible with amplification systems with a voltage of 100V or 8Ω, with strict specifications that allow installation outside the house within exposure to particularly extreme weather conditions and adapted to the sun.
- A speaker of extremely high sound quality, designed to give a dynamic and open sound.
- Stainless aluminum grill meets the highest standards
- A speaker with IP-66 standard was specially designed to meet all conditions atmospheric (sprinkler systems, water jets, etc.)
- Copper connectors to prevent corrosion protected by a waterproof cover
- Flexible installation: the speaker comes with a rack for horizontal/vertical hanging
- Suitable for installation: houses, yards, gardens, listening corners, restaurants, Event halls, cafes, educational institutions, systems Announcement, and parks
- Finish: white/black



### Specifications:

Tweeter: 1" Silk soft dome

Woofer: 4.5" graphite cone, Rubber surround

Frequency Response: 75Hz-20kHz

Rated Power (8Ω): 80W

Power Tappings (100V): 30W, 15W, 7.5W, 3.75W

Termination: Standard rotary connector

Attachment: Brackets, Grille, Waterproof cover

Dimensions: H232xW155xD148mm

Impedance: 8Ω

Sensitivity: 84dB

Grille: Aluminium

Certifications: IP66

Material: PP

## 5" Outdoor wall mounted speaker with transformer (each)

**BLYSS** OD560T

- Built to last product design
- High-performance 5" driver woofer with bass reflex
- Premium UV-coated cabinet prevents discoloration over time
- Support 100V amplifier for the public system and fire alarm
- Support 8Ω amplifier for home audio system
- Fast & Simple installation
- Impeccable Sound engineering

### Specifications:

Power Tappings (100V): 5W/10W/20W/40W

Rated Power (8Ω): 80W

Impedance: 8Ω

Tweeter: 1" Titanium soft dome

Woofer: 5.25" Graphite Cone, Rubber Surround

Frequency Resp.: 65Hz-20kHz

Termination: Standard pressed connector

Attachment: Bracket/Grille

Housing Material: PP

Dimensions: 275 x 190 x 180 mm



**6.5" Public Address Speaker – Indoor/Outdoor**



**Specifications:**

Woofer: 6.5"  
 Power Handling: 7.5W / 15W / 30W (100V)  
 Power Output: 60W (8Ω)  
 Impedance: 8Ω  
 Frequency Response: 90Hz–18kHz ±1dB  
 Sensitivity: 91dB ±1dB  
 Finish: Black / White



ALUMINUM GRILL

**Dimensions (cm):** H: 28 × W: 20 × D: 18

**5.25" Public Address Speaker – Indoor/Outdoor**



**Specifications:**

Woofer: 5.25"  
 Power Handling: 3.75W / 7.5W / 15W (100V)  
 Power Output: 30W (8Ω)  
 Impedance: 8Ω  
 Frequency Response: 90Hz–18kHz ±1dB  
 Sensitivity: 91dB ±1dB  
 Finish: Black / White



ALUMINUM GRILL

**Dimensions (cm):** H: 23 × W: 16 × D: 13.5

**4" Public Address Speaker – Indoor/Outdoor**



**Specifications:**

Woofer: 4"  
 Power Handling: 2.5W / 5W / 10W (100V)  
 Power Output: 20W (8Ω)  
 Impedance: 8Ω  
 Frequency Response: 90Hz–18kHz ±1dB  
 Sensitivity: 91dB ±1dB  
 Finish: Black / White



ALUMINUM GRILL

**Dimensions (cm):** H: 18 × W: 13 × D: 10

**6.5" 165W Speaker – Indoor/Outdoor**



- Rust-proof aluminum grill for durability outdoors
- Precise sound indoors and outdoors
- Elegant and modern design
- 2-Way speaker, 6.5" woofer, 1" titanium tweeter
- Transparent coating absorbs UV rays and helps maintain original color indefinitely
- IP55 rating
- Easy installation
- Vertical or horizontal mounting (mounting brackets included)
- BASS REFLEX for enhanced bass frequencies and rich, detailed sound

**Specifications**

Power: 165W  
 Frequency Response: 60Hz–20kHz ±3dB  
 Impedance: 8Ω  
 Sensitivity: 92dB  
 Weight: 2.9 kg  
 Finish: black or white

**Dimensions (cm):**

18.5X28X15.2

**5.25" 135W Speaker – Indoor/Outdoor**



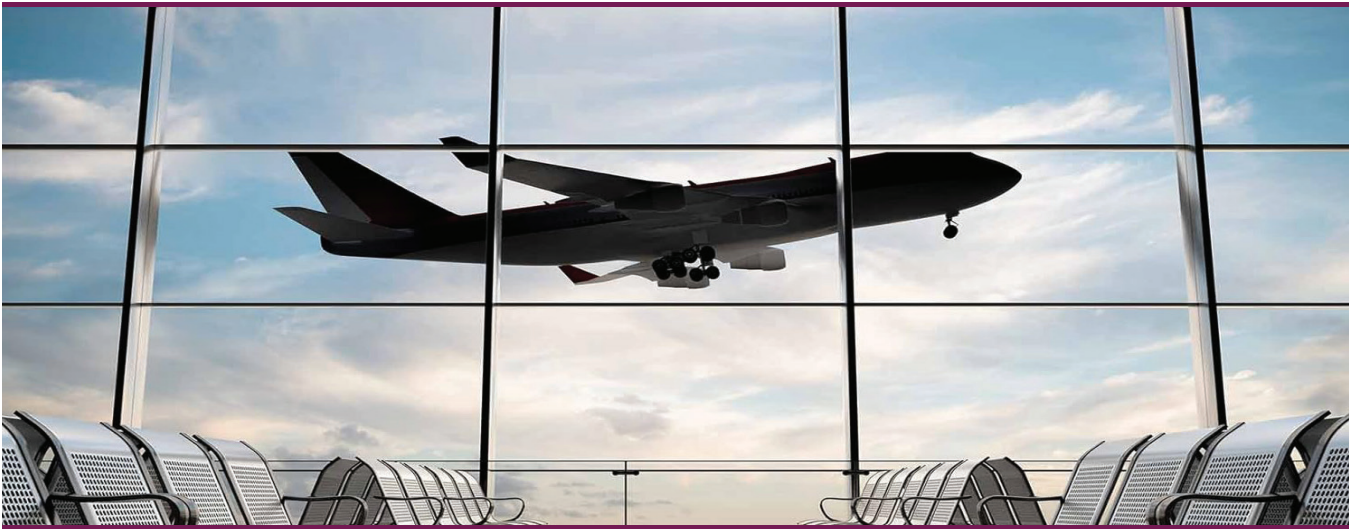
- Rust-proof aluminum grill for durability outdoors
- Precise sound indoors and outdoors
- Elegant and modern design
- 2-Way speaker, 5" woofer, 1" titanium tweeter
- Transparent coating absorbs UV rays and helps maintain original color indefinitely
- IP55 rating
- Easy installation
- Vertical or horizontal mounting (mounting brackets included)
- BASS REFLEX for enhanced bass frequencies and a rich, detailed sound

**Specifications**

Power: 135W  
 Frequency Response: 60Hz–20kHz ±3dB  
 Impedance: 8Ω  
 Sensitivity: 88dB  
 Weight: 2.7 kg  
 Finish: black or white

**Dimensions (cm):**

16 × 23.5 × 16.3



## PA Speakers

### 20W Line Transformer

**VCL-1620**

#### Speaker – PROJECTOR

Power Output: 20W – 100V  
 Woofer 6.5"  
 Impedance 8Ω  
 Frequency Response 110Hz  
 – 15kHz  
 Sensitivity 110dB

**Dimensions:**

Diameter 16.5 cm  
 17 × 24.5 cm



### 10W Line Transformer

**VCL-1510**

#### Speaker – PROJECTOR

Power Output: 10W – 100V  
 Woofer 5.25"  
 Impedance 8Ω  
 Frequency Response 130Hz  
 – 15kHz  
 Sensitivity 110dB

**Dimensions:**

Diameter 13.1 cm  
 13.8 × 20.5 cm



### Musical 4-Driver Speaker – 400W

**VHM-400**



- Operates at 8Ω or 100V
- 2-Way horn
- 6.5" Woofer
- 1" Titanium dome tweeter
- Ideal for playback in large-scale installations (institutions, halls, factories, parking lots, beaches, etc.)
- Can be mounted on walls, ceilings, or floors
- Powerful long-range sound dispersion
- Weatherproof rating: IP66
- ABS finish suitable for all weather conditions

**Specifications:**

Power Output: 400W (100V)  
 Impedance: 8Ω  
 Frequency Response: 400Hz–4kHz  
 Sensitivity: 113dB  
 Drivers: 4 × HD150N  
 Finish: White

**Dimensions (cm):**

Diameter 48.5 × Depth 52.5

### 2-Way Musical Horn Speaker – 100W

**VHM-100**



- Operates at 8Ω or 100V
- 2-Way horn
- 6.5" Woofer
- 1" Dome tweeter
- Ideal for playback in large-scale installations (institutions, halls, factories, parking lots, beaches, etc.)
- Can be mounted on walls, ceilings, or floors
- Powerful long-range sound dispersion
- Weatherproof rating: IP66
- ABS finish suitable for all weather conditions

**Specifications:**

Power Output: 100W (100V)  
 Impedance: 8Ω  
 Frequency Response: 300Hz–8kHz  
 Sensitivity: 110dB  
 Finish: White

**Dimensions (cm):**

H: 36.5 × W: 36 × D: 38.5

# Microphones

## Set of 2 Portable UHF Wireless Microphones

VOCALAI 202



- 50 Meter transmission range
- Premium capsule, designed for vocalists
- Receiver with rechargeable battery
- 10 Mic frequencies
- Hard case

### Specifications:

UHF Frequency: 498–510 MHz  
Frequency Response: 60Hz–15kHz (+0/-1.5dB)  
Total Harmonic Distortion: <0.06% for clear and pure sound quality  
Signal-to-Noise Ratio: >100dB, ensuring clear audio output  
Receiver Dimensions: 84 × 25 × 35 mm  
Microphone Dimensions: 50 × 50 × 250 mm  
Total Weight: 1.4 kg

## UHF Handheld + Madonna Microphone Set

MMU 255



- UHF
- High-frequency range
- Digital power button
- 2 XLR ports Separate from each wired channel
- Port for PL cable
- Madonna Microphone: Suitable for teachers, lecturers, and fitness instructors, Singers, actors, and more.
- 10-15 work hours
- Metal grill
- 2 Powerful UHF transmissions
- Audio selector for each microphone separately
- LCD screen
- Thin and delicate design
- Customizable, adjustable bow
- Swab to keep the sound clean
- Digital power button

### Specifications:

Distance: 30m  
Frequency Stability:  $\pm 0.005\%$   
(-10°C-50°C)  
Modulation:  $\pm 40\text{KHz}$   
S/N: >100dB  
T.H.D: <0.5% 1KHz  
Frequency range: 50Hz-18KHz $\pm 3\text{dB}$   
Receiver type: automatic  
Sensitivity: 40KHz, input: 6dBmvs/n>80dB.  
Distortion: >80dB  
Harmonic Distortion: >70dB  
Cartridge: condenser or moving-coil  
Battery: 1.5V

## UHF with 2 Handheld Mic Set

MMU 258



- UHF - high frequency range, which provides a clean and clear sound that allows you to hear the sharpness of the audio, from a distance and frequency width, background noise filter
- 2 powerful antennas for UHF transmission that allows use at a distance of up to 150 meters and is able to receive behind walls and buildings
- The microphones work with economical AA batteries between 10-15 hours of continuous work
- Full metal microphone grill - dynamic and strong round
- On/off button on the microphone + transmitter
- 2 separate XLR outputs for each wired channel
- Output to the PL cable for the amplification system, entertainment and more
- Audio selector for each microphone separately
- LCD screen showing the reception of the microphone and the channel
- Includes a fancy carrying case for storage and protection worth NIS 100



## Bookshelf Speakers

Pair of Wireless Powered Speakers-2-Way, 6.5"

**STUDIO 600**

**TWS – Connect 4 Wireless Speakers to Same Source**

TWS



- 2x75W RMS power
- Active speaker + passive speaker
- Built-in amplifier, no receiver required
- Bluetooth connectivity
- Bass, treble, and master volume controls
- Subwoofer output for active subwoofer
- Audio output allows daisy-chaining additional speakers
- Dynamic and rich sound dispersion
- RCA input • USB MP3 playback
- Acoustic frame for enhanced vocal's performance
- 2 Lightweight and convenient mounting brackets
- Easy and quick installation
- Available in black or white finish

**Specifications:**

Power: 75W + 75W (RMS)  
 Woofer: 6.5" 2-Way  
 Tweeter: 0.75"  
 Impedance: 8Ω  
 Frequency Response: 55Hz–20kHz (±3dB)  
 Sensitivity: 88dB (±3dB)  
 Voltage: AC 100–240V, 50/60Hz, 40W

**Dimensions (cm):**

Height: 30  
 Depth: 19.4  
 Width: 21.6

Pair of Wireless Powered Speakers-2-Way, 5.25"

**STUDIO 500**

**TWS – Connect 4 Wireless Speakers to Same Source**

TWS



- 2x50W RMS power
- Active speaker + passive speaker
- Built-in amplifier, no receiver required
- Bluetooth connectivity
- Bass, treble, and master volume controls
- Subwoofer output for active subwoofer
- Audio output allows daisy-chaining additional speakers
- Dynamic and rich sound dispersion
- RCA input • USB MP3 playback
- Acoustic frame for enhanced vocal's performance
- 2 Lightweight and convenient mounting brackets
- Easy and quick installation
- Available in black or white finish

**Specifications:**

Power: 50W + 50W (RMS)  
 Woofer: 5.25" 2-Way  
 Tweeter: 0.75"  
 Impedance: 8Ω  
 Frequency Response: 55Hz–20kHz (±3dB)  
 Sensitivity: 88dB (±3dB)  
 Voltage: AC 100–240V, 50/60Hz, 30W

**Dimensions (cm):**

Height: 25.3  
 Depth: 18.5  
 Width: 16.7

## Pair of Powered Speakers-2-Way, 4"

**CLASS 100**



- 2-Way, 4" Woofer
- 2x25W RMS power
- Active speaker + passive speaker
- Dynamic and rich sound dispersion
- Built-in amplifier, no receiver required
- RCA and USB memory card inputs
- Bass, treble, and main master volume controls
- Acoustic frame for enhanced vocal's performance
- 2 Lightweight and convenient mounting brackets for easy installation

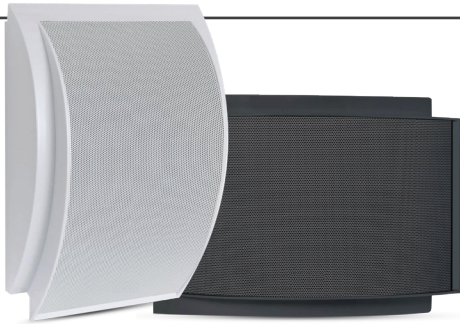
### Specifications:

Power: 2x25W  
Woofer: 4"  
Tweeter: 1"  
Impedance: 4–8Ω  
Frequency Response: 65Hz–20kHz (±3dB)  
Sensitivity: 88dB (±3dB)  
Voltage: AC 230V, 50/60Hz, 30W

### Dimensions (cm):

Height: 22  
Depth: 18  
Width: 14.5

## 5" Half-Moon Line Transformer Wall Speaker **VW 245**



### Features:

- Specifically designed for commercial and fire detection audio systems
- Compatible with 100V line transformer with 3 taps
- Easy installation, secure wall mount included
- ABS frame with metal grill
- Available in black or white

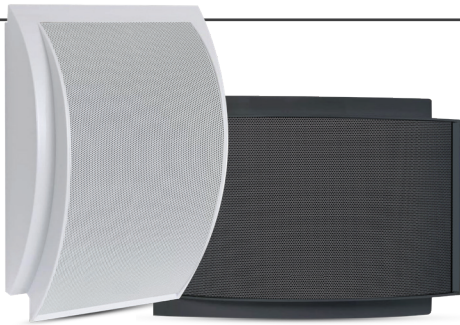
### Dimensions:

Width: 20 cm Height: 22.8 cm Depth: 8.5 cm

### Specifications:

Woofer: 5"  
Tweeter: 0.5" Neodymium  
Power Handling: 10W / 5W / 2.5W – 100V  
Power Output (8Ω): 20W  
Frequency Response: 80Hz – 20kHz ±1dB  
Sensitivity: 91dB ±1dB

## 6" Half-Moon Line Transformer Wall Speaker **VW 246**



### Features:

- Specifically designed for commercial and fire detection audio systems
- Compatible with 100V line transformer with 3 taps
- Easy installation, secure wall mount included
- ABS frame with metal grill
- Available in black or white

### Dimensions:

Width: 24 cm Height: 34.5 cm Depth: 10 cm

### Specifications:

Woofer: 6"  
Tweeter: 0.5" Neodymium  
Power Handling: 20W / 10W / 5W – 100V  
Power Output (8Ω): 40W  
Frequency Response: 80Hz – 20kHz ±1dB  
Sensitivity: 91dB ±1dB



Feel  
Freedom

# Sound Bars

## 5.2 Soundbar System With Wireless Surround Speakers & Sub

## ULTRA SBW528



### Features:

- 5.2CH Dolby home theater system Soundbar with wireless surround speaker.
- 2 x 8" wireless subwoofers for deep bass
- LED display
- Audio input: Bluetooth, HDMI/Arc, Optical, Aux, RCA to RCA Aux and USB
- DSP Sound processor
- Wireless Remote Control, CEC function, EQ Control
- Glossy Black finishing with Metal Grill

### Specifications:

Output Power Subwoofer – 200 watts  
 Soundbar – 200 watts  
 Satellites – 50 watts x 2  
 Total – 500 watts  
 Driver Size Subwoofer – 8" x 2  
 Soundbar – 2" x 4  
 Satellites – 3" x 2  
 Impedance: Subwoofer – 4 ohm  
 Line input 3.5mm, Optical IN, HDMI (ARC)  
 Dimension:  
 Subwoofer: 20 x 33 x 38 cm  
 Soundbar: 99 x 6 x 6 cm  
 Satellites: 10 x 11 x 15 cm

## Water Resistant 2.1CH 200W Peak Soundbar with Built-in Woofer (Support Dolby Digital)

## ULTRA SBW211WR



### Features:

- Water Resistant
- Bluetooth: BT 5.0
- Audio Output: 2.1CH
- AUX input
- USB input, HDMI ARC output, Optical output
- LED display
- Remote controller

### Specifications:

Rated Power: 100W RMS, 200W Peak  
 Transducer: 2in full range x 2pcs  
 Built-in Woofer: 2.5in woofer x 2pcs  
 Frequency Response: 50Hz-20kHz  
 Total Harmonic Distortion: <1%  
 Sound Pressure Level: 93dB (EIA-426B Noise, 6dB Peak Factor)  
 Signal to Noise Ratio: 96 dB @1 kHz  
 Soundbar Size: 900 x 92 x 73mm  
 Decoding the format:  
 OGG, WAV, FLAC, APE, MP3  
 Decode: Dolby Digital, Dobby Digital Plus

## 2.1 Soundbar with Wireless Subwoofer

## ULTRA SBW21



### Features:

- 2.1 Soundbar System with Wireless Subwoofer
- AUX input • USB input • HDMI (ARC) input
- Optical input • Wireless Bluetooth connection
- LED display • Plastic case, Digital Amplifier with DSP inside
- Remote control

### Specifications:

Output Power:  
 Subwoofer: 100W  
 Soundbar: 60W  
 Total: 160W

### Driver Size:

Subwoofer: 16.51cm x 1  
 Soundbar: (5.8cm x 9cm) x 2  
 Line input 3.5mm, Optical IN, HDMI (ARC)  
 Max supported memory size (USB) 32GB  
 Impedance:  
 Subwoofer: 8Ω  
 Soundbar: 4Ω  
 Dimension (W x D x H):  
 Subwoofer: 212 x 293 x 370mm  
 Soundbar: 940 x 95 x 70.5mm

## ULTRA 21150D

### 2.1CH 150W Dolby Soundbar with built-in Woofer



#### Features:

- 3.5mm AUX input
- HDMI™ (Arc) input
- Optical input / USB input
- Wireless BT connection
- LED display
- Matte Black finishing
- Digital Amplifier with DSP
- Remote control

#### Specifications:

Output Power: 130W  
 Frequency Response: 70Hz-20kHz  
 Transducer: 2.5"/4Ω 25W x 2 pcs +3.5"/8Ω 40W Woofer x 2 pcs  
 Total Harmonic Distortion: <1%  
 Signal to Noise Ratio: >/= 105dB.  
 Dimensions: 940 x141x 78 mm

## ULTRA 21100

### 2.1CH 100W Soundbar with built-in Woofer



#### Features:

- BT 5.0
- Transducer: 2.25"/8Ω 15W x 2 + 2.25"/8Ω 25W Woofer x 2
- Audio output: 2.1CH
- 3.5mm Aux in / RCA (Aux) in
- USB input
- Optical
- HDMI™ (Arc)
- LED display
- Remote control

#### Specifications:

Rated Power: 80W  
 Frequency Response: 70Hz-20kHz  
 Transducer: 2.25" full range x 2pcs +2.25" Woofer x 2 pcs  
 Total Harmonic Distortion: <1%  
 Signal to Noise Ratio: >/= 80dB.  
 Dimensions: 810x102x70 mm

## ULTRA 21100M

### 2.1CH Soundbar with wired subwoofer & HDMI



#### Features:

- Audio Output: 2.1CH
- AUX input / Optical input
- HDMI(Arc) input
- Wireless Bluetooth connection
- With light
- Plastic case, Digital Amplifier with DSP inside
- Remote controller
- Wired subwoofer

#### Specifications:

Output Power: 80W R.M.S  
 S/N Ratio: ≥72dB  
 Bar speaker: 2.25" x 2, 4Ω  
 Subwoofer: 5.25" x 1, 4Ω  
 Frequency: 45Hz-20KHz  
 Power supply: SMPS 110V-240V AC POWER  
 Dimensions: 405X99X75 MM  
 Subwoofer: 220X140X360 MM

## ULTRA SBW176

### 2.1ch Bluetooth Soundbar (With Wireless Subwoofer)



#### Features:

- LED Indicator Lights: Different color indicates different mode working
- DSP Sound, Deep Bass, HDMI™(Arc) interface
- Wireless Remote Control, CEC function, EQ Control
- Glossy Black finishing with Metal Grill
- Accessories: Power Cord, Power Adaptor, 3.5mm Line-In Cable, Optical Cable, Remote Control

#### Specifications:

Power Supply: AC 110V-240V / 50Hz/60Hz, DC 12V (For Sub-woofer)  
 Output Power: 125W  
 S/N: >/= 105dB.  
 Frequency: 70Hz-20KHz  
 Speaker Units: 55\*85mm/4Ω 25W x 2 + 5.25"/4Ω 75W woofer x 1  
 Audio Input: 3.5mm Line-In, USB, Optical In, Coaxial In, HDMI™(Arc), Bluetooth  
 Bluetooth Ver: 5.0  
 Bluetooth Distance: Approx. 15m  
 Product Measurements: L 800 x D 78 x H 70 mm (Soundbar)  
 L 200 x D 200 x H 280 mm (Sub-Woofer)

### 2.1CH 2.0 BT Sound Bar & Karaoke Speaker with 2 Wireless Mics

## SING BAR



#### Features:

- DSP sound processor - high-quality sound.
- Bluetooth 5.0 - listen to music from the smartphone to the speaker
- Included two wireless microphones - UHF frequency with a transmission range of 10 meters for singing, lectures, tutorials, and more.
- Soundbar 2.0 - the sound of a home theater fills and enhances the room with rich bass and effects
- LINE IN - 3.5PL input MMM allows direct connection to smartphones, tablets, and more ...
- USB input.
- LINE OUT - to connect another speaker with the same audio source
- Large LED display - shows the source of the music or FM radio stations
- Rechargeable battery - with a capacity of 4000mAh
- Remote control - included in the kit

#### Specifications:

Bluetooth Version 5.0 + EDR  
 Power Output: 100W max  
 Frequency Response: 65hz ~20khz  
 Power Supply: Lithium battery ~4000mAh  
 Dimensions: 25 x 9.5 x 6 cm

# Home Theater Speakers

## Floor-standing Loudspeakers 250W

## SUPERNOVA 8F



### Features:

- Three 6.5" woofers provide realistic sound distribution
- Minimal distortion
- 1" silk dome tweeter with oil cooling system for crystal clear highs
- Powerful 250W output; robust & controlled audio
- Piano finish worthy of any setting

### Specifications:

Power Output- 250W  
Frequency Response: 42Hz-20KHz  
Impedance: 8 Ohm  
Driver Complement: 2 Way- DRAV FIG3/6.5  
Woofer: 3x6.5in  
Tweeter: 1in  
S/N Ratio: 92 db  
Dimensions: 81 x 33 x 29cm

## Floor-standing Loudspeakers 220W

## SUPERNOVA 5F



### Features:

- Two 6.5" woofers combine to provide realistic sound distribution
- Minimal distortion
- 1" silk dome tweeter with oil cooling system for crystal clear highs
- Powerful 220W output; robust & controlled audio
- Piano finish worthy of any setting

### Specifications:

Power Output- 220 Watts  
Frequency Response: 42Hz-20KHz  
Impedance: 8 Ohm  
Driver Complement: 2 Way- DRAV FIG  
Woofer: 2x6.5"  
Tweeter: 1"  
S/N Ratio: 92 db  
Dimensions: 81 x 33 x 29cm  
(31 x13 x 11.5in)

## Center Speaker 300W

## SUPERNOVA C++



### Features:

- Two 8" woofers offer life like sound dispersion with minimal distortion
- 1" silk dome tweeter with oil cooling system for crystal clear highs
- Magnetically shielded drivers eliminate interference for nearby electronic components
- Powerful 3-way 300w output power provide balanced sound distribution
- Piano finish that will enhance any setting

### Specifications:

Power Output: 300 Watts  
Frequency Response: 60Hz-20KHz  
Crossover Frequency: 3800Hz  
Sensitivity: 89dB  
Impedance: 8 Ohm  
Driver Complement: 2 Way- DRAV FIG  
Woofer: 2x8" midwoofer  
Tweeter: 1"  
Dimensions: 62x27x25.2cm  
Weight: 8.15kg

## Center Speaker 200W

## SUPERNOVA C+



### Features:

- Two 6.5" woofers offer life like sound dispersion with minimal distortion
- 1" silk dome tweeter with oil cooling system for crystal clear highs
- Magnetically shielded drivers eliminate interference for nearby electronic components
- Powerful 3-way 200w output power provide balanced sound distribution
- Piano finish that will enhance any setting

### Specifications:

Power Output- 200 Watts  
Frequency Response: 60Hz-20KHz  
Crossover Frequency: 3800Hz  
Sensitivity: 89dB  
Impedance: 8 Ohm  
Driver Complement: 2 Way- DRAV FIG  
Woofer: 2x6.5" midwoofer  
Tweeter: 1"  
Dimensions: 22 x 56 x 19cm

**Center Speaker 150W**



**Features:**

- Two 5.25" woofers provide realistic sound distribution
- Minimal distortion
- 1" Silk dome tweeter with oil-cooling system for crystal-clear highs
- Magnetically shielded drivers eliminate interference from nearby electronic components
- Powerful 3-Way, 150W output provides balanced sound distribution
- Piano finish worthy of any setting

**Specifications:**

Power Output: 150W  
 Frequency Response: 60Hz-20KHz  
 Crossover Frequency: 3800Hz  
 Sensitivity: 89dB  
 Impedance: 8 Ohm  
 Driver Complement: 2 Way- DRAV FIG  
 Woofer: 2x5.25in midwoofer  
 Tweeter: 1in  
 Product Dimensions: 16 x 46 x 19cm  
 Product Weight: 4kg (9lbs)

**Surround Speaker 140W**



**Features:**

- 5.25" Woofer provides realistic sound distribution
- 1" Silk dome tweeter with oil-cooling system for crystal-clear highs
- Powerful 2-Way, 140W output provides balanced audio
- Piano finish worthy of any setting

**Specifications:**

Power Output: 140W  
 Frequency Response: 65Hz-20KHz  
 Crossover Frequency: 3800Hz  
 Sensitivity: 89dB  
 Impedance: 8 Ohm  
 Driver Complement: 2-Way DRAV FIG 3/6.5  
 Woofer: 1x5in midwoofer  
 Tweeter: 1in  
 Product Dimensions: 31 x 18 x 19cm

**Angled Rear Speaker**



**Features:**

- One 5" woofers offer life like sound effects
- 1" silk dome tweeter with oil cooling system for crystal clear highs M
- Powerful 2-way 60w output power provide balanced sound distribution
- Piano finish that will enhance any setting

**Specifications:**

Power Output: 140 Watts  
 Frequency Response: 60Hz-20KHz  
 Crossover Frequency: 3800Hz  
 Sensitivity: 89dB  
 Impedance: 8 Ohm  
 Driver Complement: 2 Way- DRAV FIG  
 Woofer: 1x5" midwoofer  
 Tweeter: 1"  
 Dimensions: 17x13x30cm  
 Weight: 5.6kg

**5.25" Magnetic Grill Cinema Speaker**

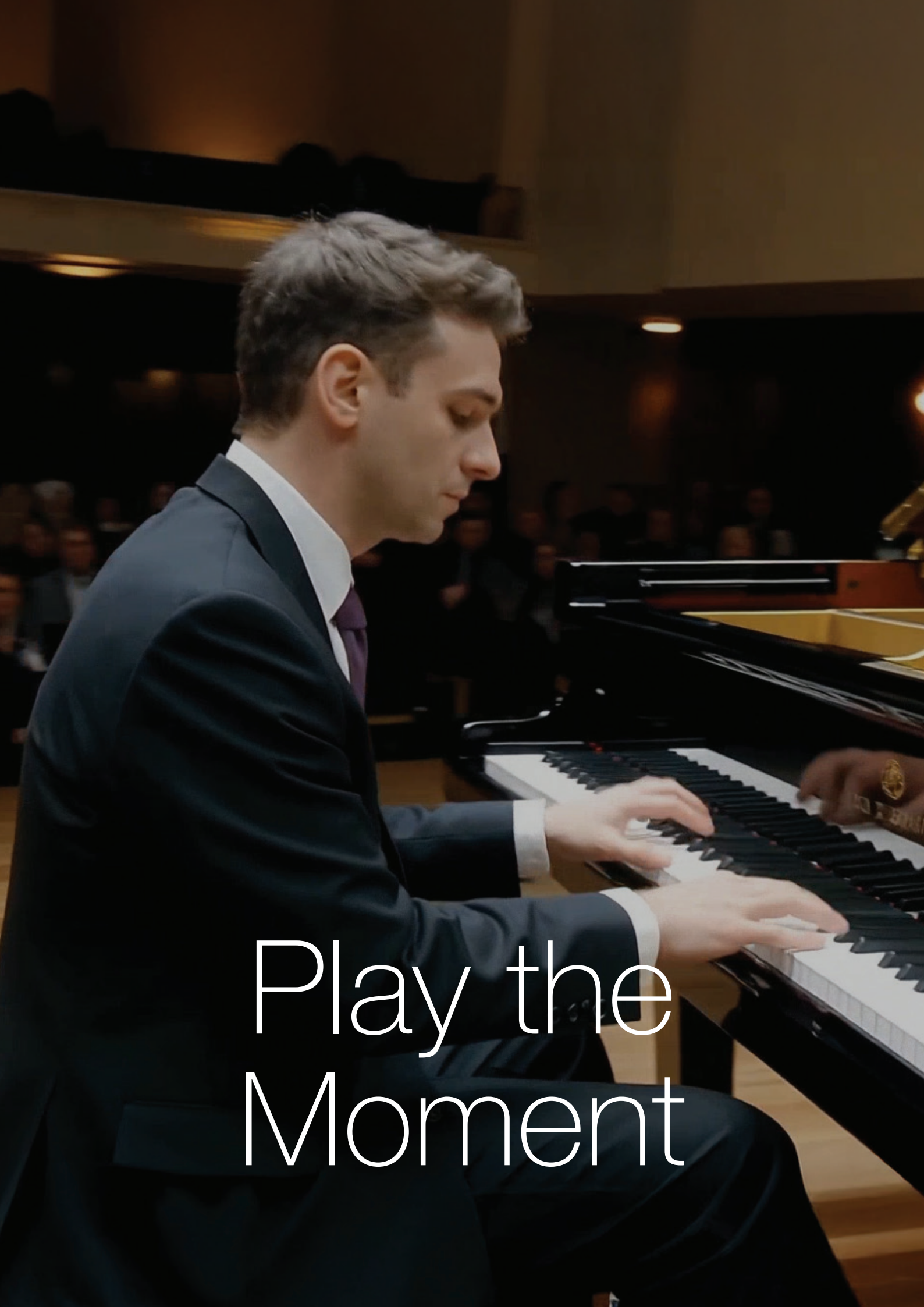


**Features:**

- Easily-installed magnetic mesh
- 2-Way 5.25" paper cone woofer
- 1" Silk dome tweeter
- Wooden exterior with a guiding cutout in the front
- Luxury matte-white finish
- Flexible usage: can be placed on a desktop/floor or hung on a wall
- Outstanding main speaker solution for home cinemas
- With a high SPL, the speaker can cover large spaces and ensure balanced sound for all listeners.
- 6dB crossover allows for accurate frequency balancing
- Available in black and white

**Specifications:**

Power Output: 2 -Way 80W  
 Frequency: 70Hz-20 KHz  
 Sensitivity: 90dB±3dB  
 Impedance: 8Ω  
 Woofer: 5.25"  
 Tweeter: 1" Dome  
 Crossover network: 6dB±2dB  
 Box size: 358\*220\*100mm



Play the  
Moment

# Subwoofers

## 12" 200W Subwoofer

## SN12 SUB



### Features:

- Pure subwoofer that allows you to experience the clear bass of your favorite music as it was intended.
- Massive amplifiers provide the right combination of stability and power, even at the lowest frequencies and highest volumes, fully enveloping your space with sound.

### Specifications:

Power Output: 200W  
Frequency Response: Adjustable 40Hz ~180Hz  
Impedance: 8 ohm  
Power Supply: 220/240V  
Connections: RCA  
Product Dimensions: 43.5 x 40 x 43.5 cm

## 10" 150W Subwoofer

## SN10 SUB



### Features:

- Pure subwoofer that allows you to experience the clear bass of your favorite music as it was intended.
- Massive amplifiers provide the right combination of stability and power even at the lowest frequencies and highest volumes, drenching you with an all encompassing splash of sound.

### Specifications:

Power Output: 150W  
Frequency Response: Adjustable 40Hz ~180Hz  
Impedance: 8 ohm  
Power Supply: 110/220V  
Connections: RCA Connector  
Product Dimensions: 33.5 x 29 x 36 cm

## 10" Active Professional Subwoofer

## SUB AS10



### Features:

- Max Power: 250W
- Function: RCA/XLR input
- Input voltage: 110-240V/50-60Hz
- Accessories: 2 Audio lines (1 to 2, 2 to 2)
- Carton size: 405 mm x 425 mm x 415mm

### Specifications:

Speaker power in ohmic mode: 150W  
Impedance: 4Ω  
Woofer size : 10"  
Frequency Response: 30Hz~200Hz  
Sensitivity: 90dB ±3dB  
Dimensions: L330mm x W345mm x H340mm  
Weight: 11.5kg

## 500W Passive Subwoofer

## MSUB-15

### PREMIUM LINE



Power Output: 500W  
Subwoofer: 15"  
Impedance: 8Ω  
Frequency Response: 45Hz~180Hz (±3dB)  
Finish: Black

### Dimensions (cm):

H 45.5 x W 37.2 x D 45.7



# Powered PA Bluetooth Speakers

## 15" 500W RMS Powered Speaker for Large Spaces

## PSX-15500



- Amplification: CLASS D
- Bluetooth
- Digital display
- FM Radio
- 5-Band graphic equalizer
- Memory card and USB inputs
- LINE IN, RCA / XLR Input
- 3 Outputs
- Microphone inputs
- Instrument input
- Voltage selection switch
- IR remote control
- Stand socket, carry handle

### Specifications:

500W RMS  
 Woofer: 15"  
 Tweeter: 1 3/4"  
 Magnet: 60oz



### Dimensions (cm):

45 x 48.5 x 76  
 Weight: 24.2 kg



## 15" 400W RMS Powered Speaker for Large Spaces

## PSX-15400



- Amplification: CLASS A/B
- Bluetooth
- Digital display
- FM Radio
- 5-Band graphic equalizer
- Memory card and USB inputs
- LINE IN, RCA / XLR Input
- 3 Outputs
- Microphone inputs
- Instrument input
- Voltage selection switch
- IR remote control
- Stand socket, carry handle

### Specifications:

RMS: 400W  
 Woofer: 15"  
 Tweeter: 1 3/4"  
 Magnet: 80oz



### Dimensions (cm):

48 x 72 x 32  
 Weight: 21 kg



# Karaoke Bluetooth Speakers

## 2x8" 1100W Portable Speaker

### PACHA

- With 2 wireless microphones and wired microphone support
- DSP Speaker with two 8" active woofers and sound processor
- BT • TWS
- Connectivity options: AUX, USB, Micro SD, and BT
- FM Radio • Digital recording capability
- Wired microphone input with volume and echo controls
- Large LED display
- AUX input
- 6.3mm PL input (for guitar), with volume control
- Bass and treble control
- Woofer with RGB lighting effects
- Dual power sources: built-in lithium battery with up to 8 hours of playback and external transformer
- IR remote control included

#### Specifications:

Power: 1100W  
 Woofer: 2x8"  
 Tweeter: Horn Tweeter  
 Frequency Range: 48Hz-20kHz  
 ±3dB  
 Sensitivity: 88dB ±3dB  
 Impedance: 4Ω  
 Power Source 1: DC 12V  
 7500mAh  
 Power Source 2: DC 15V 4A



## 2 x 8" Portable BT Karaoke

### CLUB-280

#### Speaker with Flame Lights

- Quality-Powerful 300W sound and dynamic bass
- 4 Connection Options – AUX, USB, Micro SD and Bluetooth for smartphones and tablets
- FM Radio- Digital tuner that includes automatic scanning
- Microphones- 2 wireless microphones, wired microphone input, echo volume control switches
- 2 Power Sources – Built-in lithium battery and external transformer
- RGB Lighting -Woofers with on / off button and option to change effects
- Large LED display-Shows speaker status, song minutes and more
- AUX Input – Direct connection to smartphones, tablets and a music source with a 3.5 mm port
- 6.3 Input – Connect musical instruments such as a guitar with a digital volume selector
- Control-Bass and treble switches for full adjustment of the sound
- Remote-Full and convenient control of all functions via IR remote control
- Battery Life-Rechargeable lithium battery that allows up to 8 hours of playback

#### Specifications:

Power Output: 300W  
 Frequency Response: 48Hz-20kHz  
 Sensitivity: 88db ± 3db  
 Resistance: 4Ω  
 Power Source 1: DC 7.4V  
 5000AH  
 Power Source 2: DC 9V 1A  
 Dimensions: 32 x 32 x 71.5



## 300W Bluetooth PA System

# PMW-3012

with 2 wireless microphones

**300W**  
POWERFUL

**PRO**



### Specifications:

2-Way PA System  
Power: 300W  
Woofer: 12"  
Horn Tweeter: 1"  
Frequency Range: 48Hz-20kHz  
Sensitivity: 88dB ±3dB

**Dimensions (cm):** 37.5 × 31 × 58.5

- 2 PL Inputs
- Dual power sources
- Telescopic carry handle
- IR remote control
- Rechargeable battery
- Battery status indicator 12V/7A
- Mic priority: Music volume automatically decreases when speaking into microphone
- Bluetooth
- TWS
- Large digital display
- USB and Micro AUX SD inputs
- FM Radio
- 5-Band graphic equalizer
- RCA OUT output
- Instrument input with volume control

## 400W Bluetooth PA System

# PMW-3015

with 2 wireless microphones

**400W**  
POWERFUL

**BEST SELLER**



### Specifications:

2-Way PA System  
Power: 400W  
Woofer: 15"  
Horn Tweeter: 1"  
Frequency Range: 48Hz-20kHz  
Sensitivity: 88dB ±3dB

**Dimensions (cm):** 44 × 33.5 × 70

- 2 PL Inputs
- Dual power sources
- Telescopic carry handle
- IR remote control
- Rechargeable battery
- Battery status indicator 12V/7A
- Mic priority: Music volume automatically decreases when speaking into microphone
- Bluetooth
- TWS
- Large digital display
- USB and Micro AUX SD inputs
- FM Radio
- 5-Band graphic equalizer
- RCA OUT output
- Instrument input with volume control

## Turntables

### Professional 80W Stereo Turntable with Shelf Speakers and Dust

 **audio-technica** *Harper* **HRT-24**

#### Cover



### Specifications:

Drive type: Belt Drive  
Platter diameter: 11"  
Speakers: 2 × 40W  
Power source: 12V/2.4A adapter

### Dimensions (cm):

Turntable: 41.8 × 35.6 × 12.5  
Speakers: 16 × 15.8 × 24.9

- 2 Speeds: 45, 33.3 RPM
- Compatible with 10", 12", and 7" records
- Professional Audio-Technica cartridge (Model 3600)
- High-quality metal tonearm with adjustable counterweight for precise, high-performance playback
- Bluetooth 5.0 allows wireless music playback from the turntable system
- 40 × 2W Stereo shelf speakers: Wooden resonance boxes with woofer for deep bass and tweeter for clear highs (each), delivering high-quality sound
- RCA output connect to receiver, powered speaker, computer, etc.
- PHONO output for direct connection to an amplifier with a turntable input
- USB output for recording and converting vinyl to MP3
- 11" metal platter
- Shock absorber ensures clean sound; protects records from scratches
- Finish: Retro wood



pure acoustics®

THE PURE SOUNDS OF LIFE